

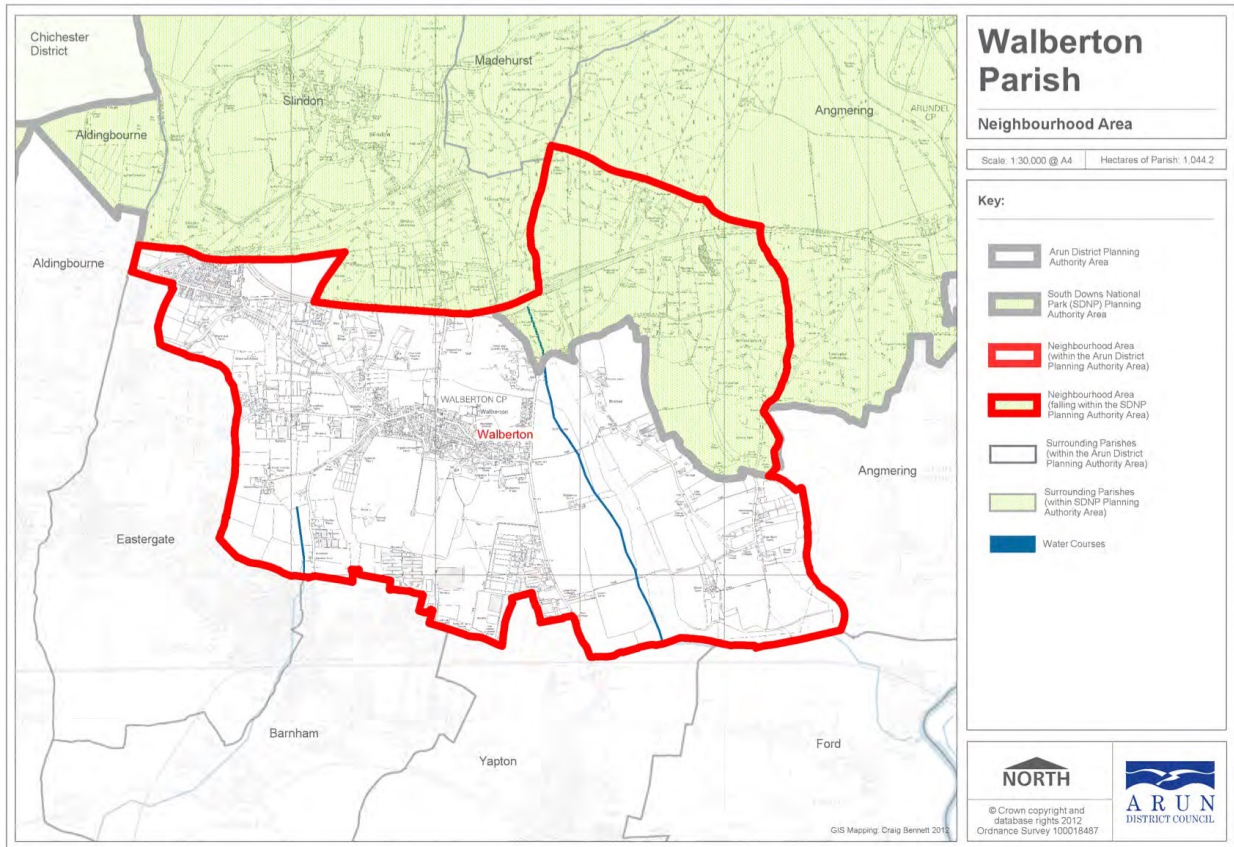


Walberton Neighbourhood Development Plan 2019 - 2031

Basic Conditions Statement

Published March 2020

Neighbourhood Plan Area Designation - Plan A



1. Introduction

1.1 This Statement has been prepared by Walberton Parish Council (“the Parish Council”) to accompany its submission to the local planning authority, Arun District Council (“ADC”), of the Walberton Neighbourhood Development Plan (“the Neighbourhood Plan”) under Regulation 15 of the Neighbourhood Planning (General) Regulations 2012 (“the Regulations”).

1.2 The Neighbourhood Plan has been prepared by the Parish Council, a qualifying body, for the Neighbourhood Area covering the whole of the Parish of Walberton, as designated by the Local Plan Sub- Committee of Arun District Council on 10 December 2012 (see Plan A).

1.3 The policies described in the Neighbourhood Plan relate to the development and use of land in the designated Neighbourhood Area. The plan period of the Neighbourhood Plan is from the 1st January 2019 to 31st March 2031 and it does not contain policies relating to excluded development in accordance with the Regulations.

1.4 The Statement addresses each of the four ‘basic conditions’ required by the Regulations and explains how the submitted Neighbourhood Plan meets the requirements of paragraph 8 of Schedule 4B to the 1990 Town & Country Planning Act.

1.5 The Regulations state that a Neighbourhood Plan will be considered to have met the basic conditions if:

- having regard to national policies and advice contained in guidance issued by the Secretary of State, it is appropriate to make the neighbourhood development plan;
- the making of the neighbourhood development plan contributes to the achievement of sustainable development;
- the making of the neighbourhood development plan is in general conformity with the strategic policies contained in the development plan for the area of the authority (or any part of that area);
- the making of the neighbourhood development plan does not breach, and is otherwise compatible with, EU obligations.

2. Background

2.1 The original Walberton Neighbourhood Plan 2015 - 2035 (referred to hereafter as the Plan) was ‘made’ by Arun District Council on the 8th March 2017 following a Referendum at when 95.66% voted in favour.

2.2 The Plan has provided a vision for the future of the parish, and set out clear policies, principles and objectives to realise those visions. The policies accorded with higher level planning policy principally the National Planning Policy Framework (NPPF)

and the Arun District Council Local Plan 2003 as well as the Draft Arun District Local Plan 2011-2031, as required by the Localism Act.

2.3 Since the completion of the Plan, which was one of the first in the country, a lot has changed both in national policy terms and at a local level with the Arun District Local Plan which has now been adopted.

2.4 The adoption of the Arun District Local Plan 2018 required a review and where appropriate amendment of the Walberton Neighbourhood Plan to ensure the two documents are in alignment and reflect the new policies.

Neighbourhood Plan Review 2019 - 2031

2.5 The revised Plan comprises of all of the saved policies from the Walberton Neighbourhood Plan 2015 - 2035 and some new and amended policies and amendment to some maps.

3. Conformity with National Planning Policy

3.1 The Neighbourhood Plan has been prepared with regard to national policies as set out in the Revised National Planning Policy Framework (RNPPF).

3.2 Compliance with the key objectives of the NPPF ensures that the Neighbourhood Plan promotes Sustainable Development.

3.3 Each policy within the Plan has been assessed against the relevant 13 chapters set out in the RNPPF as well as against the objectives set out in the Plan. Those chapters are:

5. Delivering a sufficient supply of homes
6. Building a strong, competitive economy
7. Ensuring the vitality of town centres
8. Promoting healthy and safe communities
9. Promoting sustainable transport
10. Supporting high quality communications infrastructure
11. Making effective use of land
12. Achieving well-designed places
13. Protecting Green Belt land
14. Meeting the challenge of climate change, flooding and coastal change

15. Conserving and enhancing the natural environment
16. Conserving and enhancing the historic environment
17. Facilitating the sustainable use of minerals

4. General conformity with the strategic policies of the development plan for the area.

4.1 The Neighbourhood Plan has been prepared to ensure its general conformity with the strategic policies of the development plan for the District which is the Arun Local Plan 2011-2031 adopted in July 2018. An assessment of the general conformity of each new policy with the current development plan is shown in the table below.

Walberton NDP Policy	RNPPF Chapter	Arun Local Plan Policy
VE10 2020 Biodiversity corridors	15	ENV DM5
VE11 2020 Archaeology	16	HER DM6
VE12 2020 Flint walls	16	HER SP1
VE13 2020 Distinctive views and vistas	15	QE SP1
HP1 2020 BUAB	15	SD SP2
HP2 2020 Windfall sites	15	H SP1
HP5 2020 Woodcroft	5	H SP2
HP6 2020 Housing Mix	5	H SP3
HP14 2020 Dower House	5	H SP4
HP15 2020 Longwall	5	H SP5
HP16 2020 Sussex Business Park	5	H SP6
HP17 2020 Gracelands Farm	5	H SP7
HP18 2020 Fontwell Field	5	H SP8
GA2 Footpath, Bridleway and cycle path network	6	TOU DM1
GA7 A27 Arundel Bypass	6	T SP3
CL6 Health Care facilities	8	HWB SP1
CL9 2020 Community child care facilities	8	HWB SP2

5. Compatibility with EU Legislation

5.1 The Neighbourhood Plan has regard to the fundamental rights and freedoms guaranteed under the European Convention on Human Rights and complies with the Human Rights Act.

5.2 A screening opinion was issued by ADC which advised that the Neighbourhood Plan required a strategic environmental assessment (SEA) which is provided at .