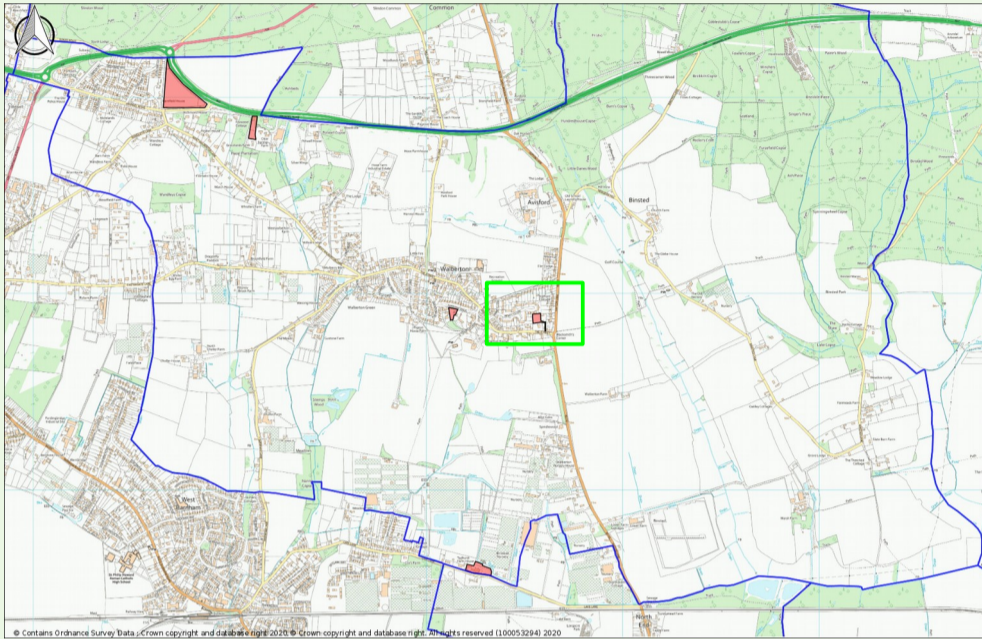




# Site Q: Land to the rear of Longwall

Site location map



Site **included** in the Neighbourhood Plan

### Reasons for inclusion

- ✓ AECOM, the Neighbourhood Plan's professional advisors on the site assessments, recommended inclusion:
  - ✓ The site has been confirmed as available.
  - ✓ A previous planning consent for development has lapsed.
  - ✓ The site is located within the built-up area boundary (dashed line on the location map).

This site provides a net yield of 3 dwellings.