

Strategic Environmental Assessment for the Walberton Neighbourhood Plan

Scoping Report

Walberton Neighbourhood Plan Steering Group

December 2019

Quality information

Prepared by

Jessica Playle
Graduate
Environmental
Consultant

Checked by

Ryan Putt
Environmental
Consultant

Approved by

Nick Chisholm-Batten
Associate Director

Revision History

Revision	Revision date	Details	Authorized	Name	Position
V1.0	16 th December 2019	Initial draft version for Neighbourhood Group comment	16 th December 2019	Nick Chisholm-Batten	Associate Director
V2.0	23 rd December 2019	Consultation version	23 rd December 2019	Nick Chisholm-Batten	Associate Director

Prepared for:

Walberton Neighbourhood Plan Steering Group

Prepared by:

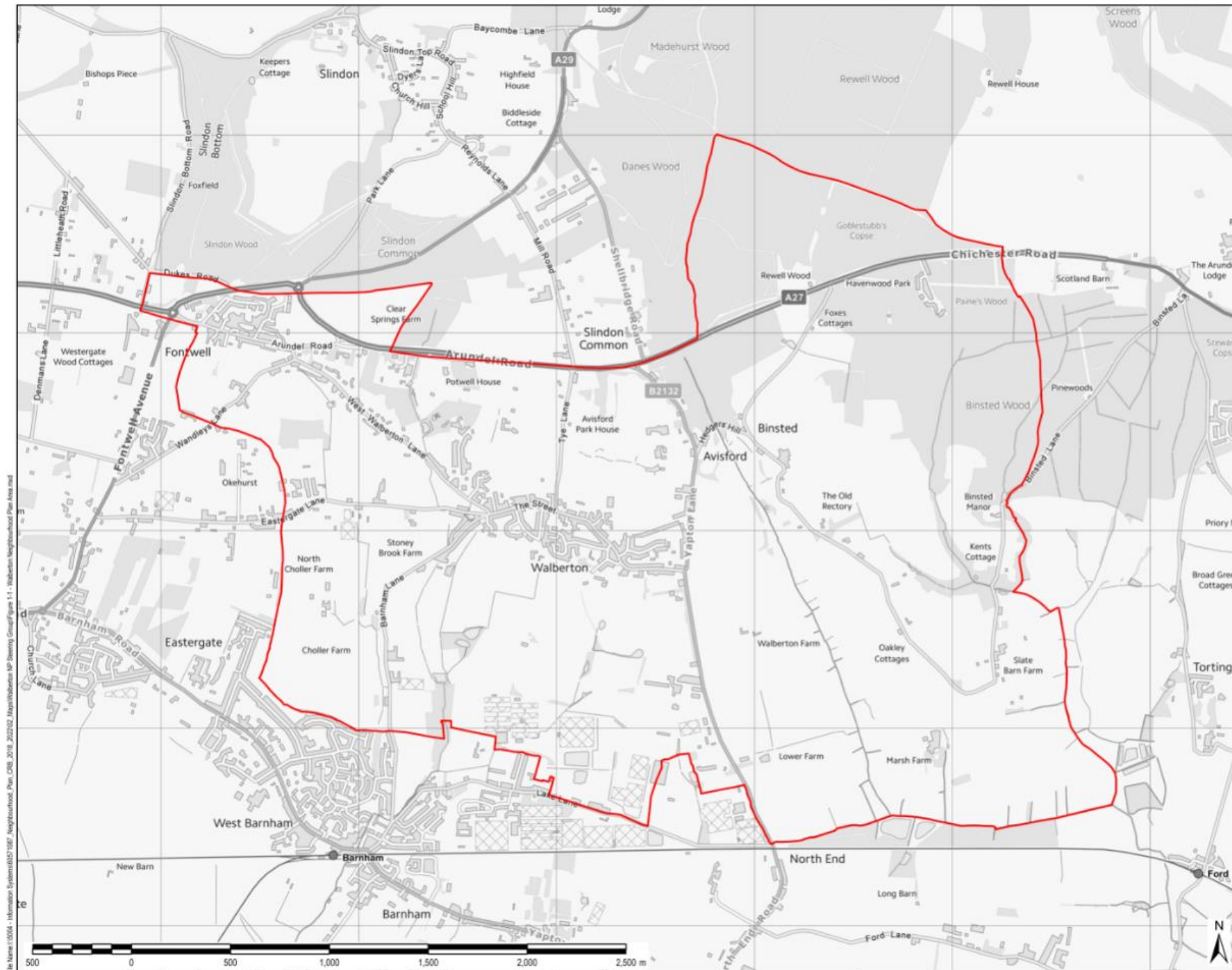
AECOM Limited
Portwall Place
Portwall Lane
Bristol BS1 6NA
United Kingdom
aecom.com

© 2019 AECOM Limited. All Rights Reserved.

This document has been prepared by AECOM Limited ("AECOM") for use of Locality (the "Client") in accordance with generally accepted consultancy principles, the budget for fees and the terms of reference agreed between AECOM and the Client. Any information provided by third parties and referred to herein has not been checked or verified by AECOM, unless otherwise expressly stated in the document. No third party may rely upon this document without the prior and express written agreement of AECOM.

Table of Contents

1.	Introduction.....	1
	Background	1
	Relationship of the Walberton Neighbourhood Plan with the Arun Local Plan and the South Downs National Park Local Plan.....	2
	SEA Explained	3
	This Scoping Report.....	3
	Structure of this Report	4
2.	Air Quality	5
3.	Biodiversity and Geodiversity	7
4.	Climate Change	14
5.	Landscape	23
6.	Historic Environment.....	30
7.	Land, Soil and Water Resources.....	37
8.	Population and Community.....	42
9.	Health and Wellbeing.....	50
10.	Transportation.....	54
11.	Next Steps	58
	Subsequent stages for the SEA process	58
	Consultation on the Scoping Report	58



THIS DRAWING IS TO BE USED ONLY FOR THE PURPOSE OF ISSUE THAT IT WAS ISSUED FOR AND IS SUBJECT TO AMENDMENT

LEGEND
 Walberton Neighbourhood Plan Area

Copyright
 Contains Ordnance Survey Data © Crown Copyright and database right 2019

Version of Issue
FINAL

Client
WALBERTON NEIGHBOURHOOD PLAN STEERING GROUP

Project Title
STRATEGIC ENVIRONMENTAL ASSESSMENT FOR THE WALBERTON NEIGHBOURHOOD PLAN

Drawing Title
WALBERTON NEIGHBOURHOOD PLAN AREA

Drawn CN	Checked JW	Approved JP	Date 03/12/2019
AECOM Internal Project No: 60571087		Scale @ A3 1:17,500	

THIS DOCUMENT HAS BEEN PREPARED PURSUANT TO AND IS SUBJECT TO THE TERMS OF AECOM'S APPOINTMENT BY THE CLIENT. AECOM ACCEPTS NO LIABILITY FOR ANY USE OF THIS DOCUMENT OTHER THAN BY ITS ORIGINAL CLIENT OR FOR PURPOSES FOR WHICH IT WAS PREPARED AND IS PROVIDED.

AECOM
 Soil House
 Barton Lane, Barton
 Hampshire SO21 3BP
 Telephone 01203 712000
 Fax 01203 712001
 www.aecom.com

Sheet Number
FIGURE 1.1

Rev
01

File Name: I:\004 - Information Systems\BDS\7167 - Neighbourhood Plan_OB_2019_2022\02 - Maps\Walberton NP Steering Group\Figure 1.1 - Walberton Neighbourhood Plan Area.mxd



1. Introduction

Background

- 1.1 AECOM has been commissioned to undertake an independent Strategic Environmental Assessment in support of Walberton Parish's Neighbourhood Plan, which is a revision of the adopted Neighbourhood Plan which was 'made' in 2017. The 'made' Neighbourhood Plan is being reviewed in order to align itself with the Arun Local Plan which was adopted in 2018.
- 1.2 The Walberton Neighbourhood Plan is currently being prepared as a Neighbourhood Development Plan under the Localism Act 2011 and the Neighbourhood Planning (General) Regulations 2012.
- 1.3 It is currently anticipated that the Neighbourhood Plan will be submitted to Arun District Council in 2020 and undergo a referendum later that year.
- 1.4 Key information relating to the Walberton Neighbourhood Plan is presented in **Table 1.1**.

Table 1.1: Key facts relating to the Walberton Neighbourhood Plan

Name of Responsible Authority	Walberton Parish Council
Title of Plan	Walberton Neighbourhood Plan
Subject	Neighbourhood planning
Purpose	<p>The Walberton Neighbourhood Plan is being prepared as a Neighbourhood Development Plan under the Localism Act 2011 and Neighbourhood Planning (General) Regulations 2012. The Plan will be in general conformity with the Arun Local Plan 2018.</p> <p>The Walberton Neighbourhood Plan will be used to guide and shape development within the Neighbourhood Plan area.</p>
Timescale	To 2036
Area covered by the plan	The Walberton Neighbourhood Plan area covers the parish of Walberton in West Sussex (Figure 1.1).
Summary of content	The Walberton Neighbourhood Plan will set out a vision, strategy and range of policies for the Neighbourhood Plan area.
Plan contact point	Name: Peter Brown Email address: pjbrown294@btinternet.com

Relationship of the Walberton Neighbourhood Plan with the Arun Local Plan and the South Downs National Park Local Plan

- 1.5 The Walberton Neighbourhood Plan area extends across two Local Planning Authorities (LPAs) (Arun District Council (ADC) and South Downs National Park (SDNP)). This is given the north eastern part of the parish is within the South Downs National Park. As such, where appropriate, given the geographic coverage of the parish, the Neighbourhood Plan should be in general conformity with the strategic policies for both Local Planning Authorities.
- 1.6 The adopted Walberton Neighbourhood Plan was 'made' by Arun District Council on the 8th March 2017 following a Referendum at which 95.66% of residents voted in favour. Following the adoption of the Arun Local Plan 2018, it has been necessary to review and amend the Walberton Neighbourhood Plan to ensure the two documents are in alignment and reflect the new policies.
- 1.7 In the context of the Neighbourhood Plan area, Walberton is designated as a 'village' within the Arun Local Plan, along with the settlements of Binsted, and Fontwell. The Local Plan states that the village of Walberton has a limited range of facilities and services. Comparatively, the settlements of Fontwell and Binsted have very limited services and facilities. Policy H SP1 'The Housing Requirement'¹ includes a strategic allocation of 400 dwellings (allocation SD6) in Fontwell, which partly overlaps with the Neighbourhood Plan area. The policy also notes that additional non-strategic allocations will be made across the District through emerging Neighbourhood Plans or reviews of 'made' Neighbourhood Plans. In this context ADC have suggested that Walberton Parish is required to deliver sites(s) for 60 new dwellings.
- 1.8 Adopted in July 2019, the South Downs Local Plan² (2014-2033) sets out how the South Downs National Park Authority (SDNPA) will manage development over the plan period, based on the two statutory purposes and duty for national parks, namely:
- Statutory Purpose: To conserve and enhance the natural beauty, wildlife and cultural heritage of the area;
 - Statutory Purpose: To promote opportunities for the understanding and enjoyment of the special qualities of the National Park by the public; and
 - Duty: To seek to foster the social and economic well-being of the local communities within the National Park in pursuit of their statutory purposes.
- 1.9 The provisions of the South Downs National Park Local Plan and Partnership Management Plan are further discussed under the 'Landscape' SEA theme in this Scoping Report.
- 1.10 Neighbourhood plans will form part of the development plan for Arun and the South Downs, alongside, but not as a replacement for the Local Plans. Neighbourhood plans are required to be in general conformity with the Local Plans and can develop policies and proposals to address local place-based issues. In this way it is intended for the Local Plans to provide a clear overall strategic direction for development in Arun and the South Downs, whilst enabling finer detail to be determined through the neighbourhood planning process where appropriate.

¹ Arun District Council (2018): 'Arun Local Plan', [online] available to access via: <<https://www.arun.gov.uk/adopted-local-plan>> last accessed [18/09/19]

² South Downs National Park Authority (2019): 'South Downs Local Plan 2014-2033', [online] available to access via: <https://www.southdowns.gov.uk/planning/south-downs-local-plan_2019/local-plan/> last accessed [29/11/19]

SEA for the Walberton Neighbourhood Plan

SEA screening for the Neighbourhood Plan

- 1.11 The Walberton Neighbourhood Plan has been screened in by Arun District Council as requiring a Strategic Environmental Assessment (SEA).
- 1.12 A Neighbourhood Plan requires SEA where it is likely to have significant environmental effects. In this respect, the Walberton Neighbourhood Plan has been screened in as requiring an SEA process for the following reasons:
- The Neighbourhood Plan will allocate new development in the parish. This includes potentially in environmentally sensitive locations, such as:
 - locations with sensitivity for the historic environment; and
 - locations with sensitivity for landscape character, including potentially within the setting of the South Downs National Park.
 - Parts of the Neighbourhood Plan area have significant sensitivity with regards to European designated biodiversity sites. In this context the northern corner of the parish falls within the 12km wider conservation area for the Singleton and Cocking Tunnels SAC. This area of the parish contains suitable commuting and foraging habitat for bats, including a mosaic of woodland and water features including drains and ponds.
- 1.13 In light of this screening outcome, an SEA process is being undertaken to meet the specific requirements prescribed by the Environmental Assessment of Plans and Programmes Regulations 2004 (the SEA Regulations).

SEA explained

- 1.14 SEA is a mechanism for considering and communicating the potential impacts of an emerging plan, and potential alternatives in terms of key environmental issues.
- 1.15 The aim of SEA is to inform and influence the plan-making process with a view to avoiding and mitigating potential negative impacts. Through this approach, the SEA for the Walberton Neighbourhood Plan seeks to maximise the emerging plan's contribution to sustainable development.
- 1.16 SEA is undertaken to meet specific requirements prescribed by the Environmental Assessment of Plans and Programmes Regulations 2004 (the SEA Regulations).
- 1.17 Two key procedural requirements of the SEA Regulations are that:
- i. When deciding on 'the scope and level of detail of the information' which must be included in the Environmental Report there is a consultation with nationally designated authorities concerned with environmental issues; and
 - ii. A report (the 'Environmental Report') is published for consultation alongside the Draft Plan (i.e. the draft Walberton Neighbourhood Plan) that presents outcomes from the environmental assessment (i.e. discusses 'likely significant effects' that would result from plan implementation) and reasonable alternatives.

This Scoping Report

- 1.18 This 'Scoping Report' is concerned with item 'i' above. It presents a suggested scope for the SEA so that the designated authorities (Historic England, Natural England, and the Environment Agency) can provide timely comment.

SEA 'Scoping' Explained

- 1.19 Developing the draft scope for the SEA as presented in this report has involved the following steps:
- i. Defining the broader context for the Walberton Neighbourhood Plan and associated SEA (i.e. EU, UK Government and local policy and commitments), to summarise the regulatory and legislative landscape;
 - ii. Establishing the baseline for the SEA, (i.e. the current and future situation in the area in the absence of the Walberton Neighbourhood Plan), in order to help identify the plan's likely significant effects;
 - iii. Identifying particular problems or opportunities ('issues') that should be a particular focus of the SEA; and
 - iv. Developing a SEA Framework comprising objectives and appraisal questions on the basis of these issues which can then be used to appraise the draft plan.

Structure of this Report

Key Sustainability Issues

- 1.20 The outcomes of the scoping elements introduced through steps i-iv above have been presented under a series of key environmental themes, as follows:
- Air Quality;
 - Biodiversity and Geodiversity;
 - Climatic Factors (including flood risk);
 - Landscape;
 - Historic Environment;
 - Land, Soil and Water Resources;
 - Population and Community;
 - Health and Wellbeing; and
 - Transportation.
- 1.21 The selected environmental themes incorporate the 'SEA topics' suggested by Annex I (f) of the SEA Directive³. These were refined to reflect a broad understanding of the anticipated scope of plan effects. It is intended that presenting the scoping information under these themes will help enable the reader to easily locate the information of greatest interest to them.
- 1.22 Once agreed (i.e. subsequent to consultation on this Scoping Report), the suggested scope presented under these nine themes will provide a methodological 'framework' for the environmental assessment of the draft plan and reasonable alternatives.
- 1.23 The discussion of the scoping information for each theme is presented in Sections 2 to 10.

SEA Framework to assess policy proposals

- 1.24 The SEA Framework provides a way in which environmental effects can be defined and subsequently analysed based on standard 'tests'. Each proposal within the emerging Walberton Neighbourhood Plan will be assessed consistently using the framework.
- 1.25 The SEA objectives and appraisal questions proposed for the Walberton Neighbourhood Plan SEA are presented under each of the themes in Sections 2 to 10.

³ The SEA Directive is 'of a procedural nature' (para 9 of the Directive preamble) and does not set out to prescribe particular issues that should and should not be a focus, beyond requiring a focus on 'the environment, including on issues such as biodiversity, population, human health, fauna, flora, soil, water, air, climatic factors, material assets, cultural heritage including architectural and archaeological heritage, landscape and the interrelationship between the above factors' [our emphasis]

2. Air Quality

Focus of Theme

- Air pollution sources
- Air quality hotspots
- Air quality management

Policy Context

2.1 Key messages from the National Planning Policy Framework (NPPF) include:

- *'Planning policies and decisions should sustain and contribute towards compliance with relevant limit values or national objectives for pollutants, taking into account the presence of Air Quality Management Areas and Clean Air Zones, and the cumulative impacts from individual sites in local areas. Opportunities to improve air quality or mitigate impacts should be identified, such as through traffic and travel management, and green infrastructure provision and enhancement. So far as possible these opportunities should be considered at the plan-making stage, to ensure a strategic approach and limit the need for issues to be reconsidered when determining individual applications. Planning decisions should ensure that any new development in Air Quality Management Areas and Clean Air Zones is consistent with the local air quality action plan.'*
- *'Significant development should be focused on locations which are or can be made sustainable, through limiting the need to travel and offering a genuine choice of transport modes. This can help to reduce congestion and emissions and improve air quality and public health.'*
- *New and existing developments should be prevented from contributing to, being put at unacceptable risk from, or being adversely affected by unacceptable levels of air pollution.*

2.2 Published in January 2018 by the UK Government, 'A Green Future: Our 25 Year Plan to Improve the Environment'⁴ sets out a number of goals and policies in order to help the natural world regain and retain good health. In this context, Goal 1 'Clean Air' and the policies contained within 'Chapter 4: Increasing resource efficiency and reducing pollution and waste' within the 25-year plan directly relate to the air quality SEA theme.

2.3 Prepared in 2019, the Air Quality Annual Status Report for Arun District⁵ outlines five priority actions for improving air quality across the district, including:

- Working with the county council to ensure traffic light sequencing operates at optimum efficiency, and promoting road traffic calming and routing away from residential and other areas where the public may suffer significant exposure;
- Increasing education, raising awareness and the availability of air quality information and incentivising people to change their travel behaviour;
- "Cut Engine – Cut Pollution" signs where there are periodic stationary traffic queues at level crossings, capitalising on opportunities and reduce emissions by 1%;
- "Travelwise" schemes to promote sustainable transport to include more car share schemes and alternatives to the car, promotion of school and work travel plans, development and promotion of cycle routes; and

⁴ HM GOV (2018) A Green Future: Our 25 Year Plan to Improve the Environment [online] available at: https://assets.publishing.service.gov.uk/government/uploads/system/uploads/attachment_data/file/693158/25-year-environment-plan.pdf [accessed 20/11/19]

⁵ Arun District Council (2019): 'Annual Status Report' [online] available to access via: <https://www.arun.gov.uk/download.cfm?doc=docm93ijim4n14175.pdf&ver=14424> > last accessed [25/11/19]

- Working closely with planners and agencies to ensure appropriate mitigation measures are implemented for new developments and due consideration is given to air quality issues.

2.4 At the local level, policies within the 'Quality of the Environment' section of the Adopted Arun Local Plan 2018 directly relate to the Air Quality SEA theme.

Baseline Summary

Summary of Current Baseline

2.5 Arun District Council is required to monitor air quality across the district under Section 82 of the Environment Act (1995), report regularly to Defra and take action where nationally set levels are likely to be exceeded. Monitoring is undertaken to assess levels of nitrogen dioxide (NO₂), sulphur dioxide, ozone, benzene and particulates. Where exceedances exist, areas are declared as Air Quality Management Areas (AQMAs) and local authorities are required to produce an Air Quality Action Plan (AQAP) to improve air quality in the area.

2.6 The 2019 Air Quality Annual Status Report (ASR) for Arun confirms that there are no AQMAs within the Neighbourhood Plan, though the report also highlights that there is concern over increasing NO₂ levels from road traffic exhaust emissions. These emissions are the main source of air pollution in the district. In the Neighbourhood Plan area however, air quality is deemed 'good' and the national air quality objectives for nitrogen dioxide (NO₂) are being met⁶.

Summary of Future Baseline

2.7 New housing and employment provision within the parish, including through the Arun Local Plan, has the potential for adverse effects on air quality through increasing traffic flows and associated levels of pollutants such as NO₂, particularly along the main routes through the Neighbourhood Plan area.

2.8 Implementation of the aims, objectives and policies contained in the Arun Local Plan and the Local Transport Plan (discussed in Chapter 10), present opportunities to continue to improve air quality within both the Neighbourhood Plan area and the wider district.

Key Sustainability Issues

- The 2019 ASR for Arun District confirms that there are no AQMAs within the Neighbourhood Plan area.
- The ASR highlights that there is concern over increasing NO₂ levels from road traffic exhaust emissions. These emissions are the main source of air pollution in the district.
- Air quality in the Neighbourhood Plan area however remains good.
- Due to the absence of any significant air quality issues within the Neighbourhood Plan area, **the air quality theme has been scoped out for the purposes of the SEA process.**

⁶ Arun District Council (2019) Air Quality Annual Status Report [online] available to access via: <https://www.arun.gov.uk/download.cfm?doc=docm93ijim4n14175.pdf&ver=14424> last accessed [25/11/19]

3. Biodiversity and Geodiversity

Focus of Theme

- Nature conservation designations
- Geological sites
- Habitats
- Species

Policy Context

- 3.1 At the European level, the EU Biodiversity Strategy⁷ was adopted in May 2011 in order to deliver an established new Europe-wide target to *'halt the loss of biodiversity and the degradation of ecosystem services in the EU by 2020'*.
- 3.2 Key messages from the National Planning Policy Framework (NPPF) include:
- One of the three overarching objectives of the NPPF is an environmental objective to *'contribute to protecting and enhancing our natural, built and historic environment' including by 'helping to improve biodiversity.'*
 - *'Plans should: distinguish between the hierarchy of international, national and locally designated sites; allocate land with the least environmental or amenity value [...], take a strategic approach to maintaining and enhancing networks of habitats and green infrastructure; and plan for the enhancement of natural capital at a catchment or landscape scale across local authority boundaries.'*
 - *'Planning policies and decisions should contribute to and enhance the natural and local environment by: protecting and enhancing valued landscapes, sites of biodiversity or geological value and soils (in a manner commensurate with the statutory status or identified quality in the development plan); and minimising impacts on and providing net gains for biodiversity, including establishing coherent ecological networks that are more resilient to current and future pressures.'*
 - *'To protect and enhance biodiversity and geodiversity, plans should:*
 - a) *Identify, map and safeguard components of local wildlife-rich habitats and wider ecological networks, including the hierarchy of international, national and locally designated sites of importance for biodiversity; wildlife corridors and stepping stones that connect them; and areas identified by national and local partnerships for habitat management, enhancement, restoration or creation; and*
 - b) *Promote the conservation, restoration and enhancement of priority habitats, ecological networks and the protection and recovery of priority species; and identify and pursue opportunities for securing measurable net gains for biodiversity.'*
- 3.3 The Natural Environment White Paper (NEWP)⁸ sets out the importance of a healthy, functioning natural environment to sustained economic growth, prospering communities and personal well-being. It was in part a response to the UK's failure to halt and reverse the decline in biodiversity by 2010 and it signalled a move away from the traditional approach of protecting biodiversity in nature reserves to adopting a landscape approach to protecting and enhancing biodiversity. The NEWP also aims to create a green economy in which economic growth and the health of

⁷ European Commission (2011) Our life insurance, our natural capital: an EU biodiversity strategy to 2020 [online] available at: http://ec.europa.eu/environment/nature/biodiversity/comm2006/pdf/EP_resolution_april2012.pdf last accessed [11/12/19]

⁸ Defra (2012) The Natural Choice: securing the value of nature (Natural Environment White Paper) [online] available at: <http://www.official-documents.gov.uk/document/cm80/8082/8082.pdf> last accessed [11/12/19]

our natural resources sustain each other and markets, business and Government better reflect the value of nature. It includes commitments to:

- Halt biodiversity loss, support functioning ecosystems and establish coherent ecological networks by 2020;
- Establish a new voluntary approach to biodiversity offsetting to be tested in pilot areas;
- Enable partnerships of local authorities, local communities and landowners, the private sector and conservation organisations to establish new Nature Improvement Areas; and
- Address barriers to using green infrastructure to promote sustainable growth.

3.4 Reflecting the commitments within the Natural Environment White Paper and the EU Biodiversity Strategy, 'Biodiversity 2020: A strategy for England's wildlife and ecosystem services' aims to *'halt overall biodiversity loss, support healthy well-functioning ecosystems and establish coherent ecological networks, with more and better places for nature for the benefit of wildlife and people'*⁹.

3.5 The recently published 25 Year Environment Plan¹⁰ sets out the Government's environmental plan of action over the next quarter century, in the context of Brexit. The Plan aims to tackle the growing problems of waste and soil degradation, improving social justice through tackling pollution and promoting the mental and physical health benefits of the natural world. It also sets out how the Government will address the effects of climate change. These aims are supported by a range of policies which are focused on the following six key areas:

- Using and managing land sustainably;
- Recovering nature and enhancing the beauty of landscapes;
- Connecting people with the environment to improve health and wellbeing;
- Increasing resource efficiency, and reducing pollution and waste;
- Securing clean, productive and biologically diverse seas and oceans; and
- Protecting and improving the global environment.

3.6 In this context, Goal 3 'Thriving plants and wildlife' and the policies contained within Chapter 2 'Recovering nature and enhancing the beauty of landscapes' and Chapter 5 'Securing clean, productive and biologically diverse seas and oceans' directly relate to the Biodiversity and Geodiversity SEA theme.

3.7 At the local level, policies within the 'Natural Environment' section of the Adopted Arun Local Plan 2018 directly relate to the biodiversity and geodiversity SEA theme.

Baseline Summary

Summary of Current Baseline

European designated sites

3.8 There are no European designated sites located within the Neighbourhood Plan area. The nearest European designated site, Duncton to Bignor Escarpment Special Area of Conservation (SAC) is located approximately 6km to the north of the parish¹¹.

⁹ DEFRA (2011): 'Biodiversity 2020: A strategy for England's wildlife and ecosystem services', [online] Available to download from: <<https://www.gov.uk/government/publications/biodiversity-2020-a-strategy-for-england-s-wildlife-and-ecosystem-services>> last accessed [19/0918]

¹⁰ HM GOV (2018) A Green Future: Our 25 Year Plan to Improve the Environment [online] available at: https://assets.publishing.service.gov.uk/government/uploads/system/uploads/attachment_data/file/693158/25-year-environment-plan.pdf [accessed 19/09/18]

¹¹ MAGIC Maps: [online] available to access via: < <https://magic.defra.gov.uk/MagicMap.aspx>> last accessed 08/12/2019

- 3.9 The Neighbourhood Plan area also overlaps with the 12km buffer zone for the Singleton and Cocking Tunnels Special Area of Conservation. Likewise, part of the Neighbourhood Plan area is within the second impact risk zone for the Arun Valley Special Protection Area (and Ramsar Site)¹².
- 3.10 Site Improvement Plans (SIPs) have been developed for each Natura 2000 site in England as part of the Improvement Programme for England's Natura 2000 sites (IPENS). Although the IPENS project closed in 2015, the Singleton and Cocking Tunnels SIP¹³ and the Arun Valley SIP¹⁴ provide high-level overviews of the issues (both current and predicted) affecting the condition of the Natura 2000 sites. Additionally, the SIP's outline the priority actions required to improve the condition of the sites, with timescales for a number of actions ongoing until 2020. Priority actions are grouped into categories, reflecting the issues faced by the Natura 2000 sites, for each SIP relevant to the Neighbourhood Plan area, priority actions include (but are not limited to):

Singleton and Cocking Tunnels SIP

- Habitat connectivity;
- Habitat fragmentation;
- Public access / disturbance; and
- Air pollution: risk of atmospheric nitrogen deposition.

Arun Valley SIP

- Inappropriate water levels;
- Water pollution; and
- Inappropriate ditch management.

Nationally designated sites

Sites of Special Scientific Interest & Impact Risk Zones

- 3.11 There are no SSSIs within or adjacent to the Neighbourhood Plan area. However, there are five Sites of Special Scientific Interest (SSSI) located within 4km of the parish boundary, namely: 'Fairmile Bottom' SSSI; 'Arundel Park' SSSI, 'Eartham Pit, Boxgrove' SSSI; 'Halnaker Chalk Pit' SSSI; and, 'Climping Beach' SSSI.
- 3.12 SSSI Impact Risk Zones (IRZ) are a GIS tool/dataset which maps zones around each SSSI according to the sensitivities of the features for which it is notified. They specify the types of development that have the potential to have adverse impacts at a given location, including residential, rural-residential and rural non-residential. Natural England is a statutory consultee on development proposals that might impact on SSSIs.
- 3.13 Most of the Neighbourhood Plan area does not overlap with any SSSI IRZs for the types of development which are likely to be taken forward during the plan period, namely: residential, rural residential and rural non-residential. However, there is a small area of land located along the south eastern boundary of the parish which traverses IRZs relating to two types of development:
- Rural non-residential: Large non-residential developments outside existing settlements/urban areas where footprint exceeds 1ha; and

¹² Arun District Council (2019): 'Walberton Neighbourhood Development Plan: Screening Decision', [online] available to access via: <<https://www.arun.gov.uk/sea-screening-decisions>> last accessed [16/12/19]

¹³ Natural England (2015): 'Site Improvement Plan: Singleton and Cocking Tunnels', [online] available to access via: <<http://publications.naturalengland.org.uk/publication/5755291169718272>> last accessed [16/12/19]

¹⁴ Natural England (2014) 'Site Improvement Plan: Arun Valley', [online] available to access via <<http://publications.naturalengland.org.uk/publication/5353882309885952>> last accessed [10.12.2019]

- Rural-residential: Any residential development of 50 or more houses outside existing settlements/urban areas. Any residential development of 10 or more houses outside existing settlements/urban areas.

Locally important sites

- 3.14 Local Nature Reserves (LNR) may be established by Local Authorities in consultation with English Nature under Section 21 of the National Parks and Access to the Countryside Act 1949 and are habitats of local importance. Located approximately 1km north of the Neighbourhood Plan area, 'Fairmile Bottom' LNR was designated in January 1991 and covers an area of approximately 61.28 ha¹⁵. The LNR (which shares an overlapping designation with the SSSI) consists of wildflower-rich chalk grassland surrounded by woodland and is an important haven for insects such as butterflies, moths and an outstanding diversity of beetles.
- 3.15 There are two Sites of Nature Conservation Interest (SNCI) within the Neighbourhood Plan area, referred to as AR02 and AR07¹⁶:
- Binsted Wood Complex (AR02), covers an area of approximately 217.3 ha and comprises a mixture of ancient woodland, recent woodland, conifer plantation, species rich pasture and old tracks and shaws, giving rise to a very rich and diverse flora. The paths through the wood are especially rich, containing 11 species of sedge, including the Long Stalked Yellow Sedge - the only recorded location in Sussex. It is the largest block of ancient semi-natural woodland south of the South Downs in Sussex.
 - Rewell Wood Complex (AR07), is a large woodland complex north of the A27. It has a diversity of woodland habitats including ancient semi - natural woodlands as well as commercial coniferous and sweet chestnut areas. Wide rides support a rich flora and butterfly populations¹⁷.
- 3.16 The Slindon Common Gravel Pit is classified as a West Sussex Geological Site SU90/25, comprising of raised beach deposits of the Middle Pleistocene era, and holding entomological importance for its insect population. The pit has been worked out for some years and is now used for occasional 4x4 sports and training¹⁸.
- 3.17 There are a variety of Biodiversity Action Plan (BAP) Priority Habitats located in, and within proximity to the parish, including areas of deciduous woodland, good quality and semi-improved grassland, wood pasture and parkland, and traditional orchard.
- 3.18 The Sussex Biodiversity Record Centre (SBRC) data for the parish of Walberton confirms that there is a network of chalk streams within the Neighbourhood Plan area (shown below in **Figure 3.0**). The SBRC report states the following:
- 3.19 "A chalk river or stream is a watercourse which flows across chalk bedrock, and/or is influenced by local chalk geology. Chalk rivers are usually fed by underground or seasonal springs and often have 'winterbourne' stretches in their headwaters which run dry, or partially dry in late summer because of lack of rainfall recharging the spring. Sites are generally considered to be streams rather than rivers if they are no further than 5km from their source, nor greater than 5m wide (unless they have been artificially widened)".

¹⁵ Natural England (no date): 'Fairmile Bottom LNR', [online] available to access via: <<https://designatedsites.naturalengland.org.uk/SiteLNRDetail.aspx?SiteCode=L1008889&SiteName=&countyCode=&responsePerson=&SeaArea=&IFCAAArea=>> last accessed [21/11/19]

¹⁶ Sussex Biodiversity Records Centre (2014): 'Desktop Biodiversity Report' [online] available to access via: <http://www.walberton-pc.gov.uk/Evidence_Base.aspx> last accessed [26/11/19]

¹⁷ Walberton Neighbourhood Development Plan (2016): [online] available to access via <https://www.southdowns.gov.uk/wp-content/uploads/2017/03/Walberton_Made-NDP.pdf> last accessed [27/11/19]

¹⁸ Sussex Geodiversity Partnership [no date] [online] available to access via <<https://www.geodiversitysussex.org.uk/riggs.php>> last accessed [10.12.2019]

3.20 The SBRC report also states that: "All chalk rivers are fed from groundwater aquifers which means they have clean, clear water and relatively stable water temperatures. These unique conditions along with their chalk geology, support a rich diversity of wildlife including important fish populations such as brown trout, native crayfish and many other specialist species".

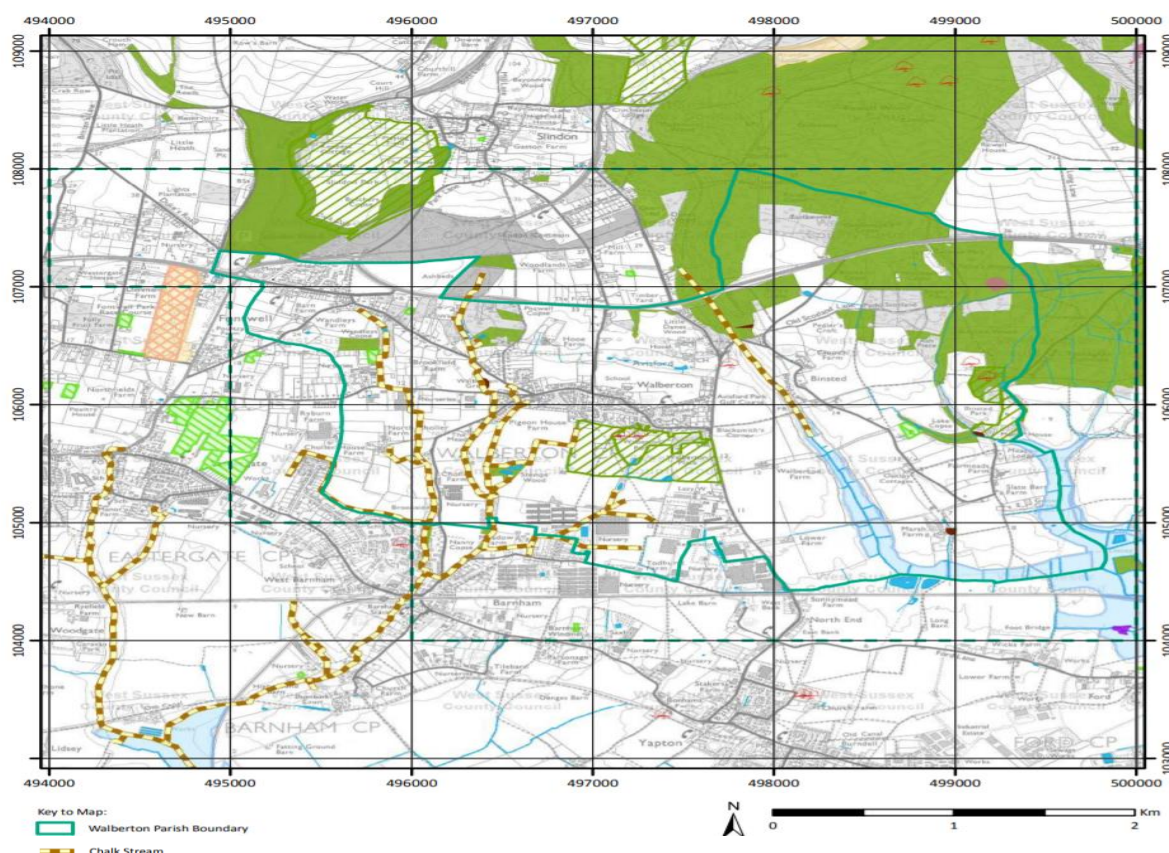


Figure 3-0: Location of chalk streams within the Neighbourhood Plan area (from the SBRC report).

3.21 **Figure 3.1** (overleaf) shows the designated wildlife sites and BAP priority habitats located within and within proximity to the Neighbourhood Plan area.

Summary of Future Baseline

3.22 Habitats and species will potentially face increasing pressures from future development within the Neighbourhood Plan area, with the potential for negative impacts on the wider ecological network. This may include a loss of habitats and impacts on biodiversity networks, which may be exacerbated by the effects of climate change, which has the potential to lead to changes in the distribution and abundance of species and changes to the composition of habitats.

3.23 The Neighbourhood Plan presents an opportunity to maximise benefits for biodiversity by including consideration of important habitats, species and designated sites at an early stage of planning for future growth. To maintain and improve the condition of biodiversity in the future, it will be important to not only protect and enhance important habitats but the connections between them. It will be crucial to effectively coordinate the delivery of housing, employment and infrastructure to ensure that opportunities to improve green infrastructure and ecological corridors are maximised both within the Neighbourhood Plan area and in the surrounding areas.

Key Sustainability Issues

- The nearest European designated site, Duncton to Bignor Escarpment Special Area of Conservation (SAC) is located approximately 6km to the north of the parish.

- The Neighbourhood Plan area also overlaps with the 12km buffer zone for the Singleton and Cocking Tunnels SAC. Likewise, part of the Neighbourhood Plan area is within the second impact risk zone for the Arun Valley SPA (and Ramsar Site).
- There are five Sites of Special Scientific Interest (SSSI) located within 4km of the Neighbourhood Plan area, namely: 'Fairmile Bottom' SSSI; 'Arundel Park' SSSI, 'Eartham Pit, Boxgrove' SSSI; 'Halnaker Chalk Pit' SSSI and, 'Climping Beach' SSSI.
- There is a small area of land located along the south eastern boundary of the parish which traverses IRZs for rural-residential and rural non-residential development types.
- At the local level, 'Fairmile Bottom' LNR is located within 1km of the Neighbourhood Plan area and contains habitats and species listed in the annexes of both the European Habitats Directive (92/43/EEC) and the European Birds Directive (79/409/EEC).
- There are two Sites of Nature Conservation Interest (SNCI) within the Neighbourhood Plan area: Binsted Wood Complex (AR02), and Rewell Wood Complex (AR07).
- There are a variety of Biodiversity Action Plan (BAP) Priority Habitats located in, and within proximity to the Neighbourhood Plan area, including areas of deciduous woodland, good quality and semi-improved grassland, wood pasture and parkland, and traditional orchard.
- The Sussex Biodiversity Record Centre (SBRC) data for Walberton confirms that there is a network of chalk streams within the Neighbourhood Plan area.
- There is one Regionally Important Geological Site (RIGs) within the Neighbourhood Plan area: Slindon Common Gravel Pit, a disused sand and gravel quarry, now used for recreational sports.

What are the SEA objectives and appraisal questions for the Biodiversity and Geodiversity SEA theme?

SEA objective Assessment Questions

Protect and enhance all biodiversity and geodiversity	<p>Will the option/proposal help to:</p> <ul style="list-style-type: none"> • Support the integrity of the European designated sites located within proximity to the Neighbourhood Plan area? • Support the status of the nationally and locally designated sites within and within proximity to the Neighbourhood Plan area? • Protect and enhance priority habitats and species, including those listed in the annexes of the European Habitats Directive and the European Birds Directive? • Achieve a net gain in biodiversity? • Support enhancements to multifunctional green infrastructure networks? • Support access to, interpretation and understanding of biodiversity and geodiversity?
---	--

4. Climate Change

Focus of Theme

- Contribution to climate change
- Effects of climate change
- Climate change adaptation
- Flood risk

Policy Context

4.1 The UK Climate Change Risk Assessment is published on a 5-yearly cycle in accordance with the requirements of the Climate Change Act 2008. It required the Government to compile an assessment of the risks for the UK arising from climate change, and then to develop an adaptation programme to address those risks and deliver resilience to climate change on the ground. For both the 2012 and the 2017 UK Climate Change Risk Assessment, the Adaptation Sub-Committee commissioned an evidence report aiming to understand the current and future climate risks and opportunities. The evidence report contains six priority risk areas requiring additional action in the next five years, see below¹⁹ :

- Flooding and coastal change risks to communities, businesses and infrastructure;
- Risks to health, well-being and productivity from high temperatures;
- Risk of shortages in the public water supply, and for agriculture, energy generation and industry;
- Risks to natural capital, including terrestrial, coastal, marine and freshwater ecosystems, soils and biodiversity;
- Risks to domestic and international food production and trade; and
- New and emerging pests and diseases, and invasive non-native species, affecting people, plants and animals.

4.2 The UK Climate Change Act²⁰ was passed in 2008 and established a framework to develop an economically credible emissions reduction path. It also highlighted the role it would take in contributing to collective action to tackle climate change under the Kyoto Protocol, and more recently as part of the UN-led Paris Agreement.

4.3 The Climate Change Act includes the following:

- 2050 Target. The Act commits the UK to reducing emissions by at least 80% in 2050 from 1990 levels.
- Carbon Budgets. The Act requires the Government to set legally binding 'carbon budgets'. A carbon budget is a cap on the amount of greenhouse gases emitted in the UK over a five-year period. The carbon budgets are designed to reflect the cost-effective path to achieving the UK's long-term objectives. The first five carbon budgets have been put into legislation and run up to 2032.
- The Committee on Climate Change was set up to advise the Government on emissions targets, and report to Parliament on progress made in reducing greenhouse gas emissions.

¹⁹ GOV.UK: 'UK Climate Change Risk Assessment Report January 2017', [online] available to download from: <<https://www.gov.uk/government/publications/uk-climate-change-risk-assessment-2017>> last accessed [20/09/18]

²⁰ GOV.UK (2008): 'Climate Change Act 2008', [online] accessible via <<http://www.legislation.gov.uk/ukpga/2008/27/contents>> last accessed [19/09/18]

- The National Adaptation Programme requires the Government to assess the risks to the UK from climate change, prepare a strategy to address them, and encourage key organisations to do the same. For more detail, visit the UK adaptation policy page 21.

4.4 Key messages from the National Planning Policy Framework (NPPF) include:

- One of the three overarching objectives of the NPPF is an environmental objective to 'contribute to protecting and enhancing our natural, built and historic environment' including by 'mitigating and adapting to climate change' and 'moving to a low carbon economy.' 'The planning system should support the transition to a low carbon future in a changing climate, taking full account of flood risk and coastal change. It should help to: shape places in ways that contribute to radical reductions in greenhouse gas emissions, minimise vulnerability and improve resilience; encourage the reuse of existing resources, including the conversion of existing buildings; and support renewable and low carbon energy and associated infrastructure.'
- 'Plans should take a proactive approach to mitigating and adapting to climate change, taking into account the long-term implications for flood risk, coastal change, water supply, biodiversity and landscapes, and the risk of overheating from rising temperatures. Policies should support appropriate measures to ensure the future resilience of communities and infrastructure to climate change impacts, such as providing space for physical protection measures, or making provision for the possible future relocation of vulnerable development and infrastructure.'
- 'Local planning authorities should support community-led initiatives for renewable and low carbon energy, including developments outside areas identified in local plans or other strategic policies that are being taken forward through neighbourhood planning.'
- Direct development away from areas at highest risk of flooding (whether existing or future). 'Where development is necessary, it should be made safe for its lifetime without increasing flood risk elsewhere.'

4.5 The Flood and Water Management Act²² highlights that alternatives to traditional engineering approaches to flood risk management include:

- Incorporating greater resilience measures into the design of new buildings, and retro-fitting properties at risk (including historic buildings);
- Utilising the environment in order to reduce flooding, for example through the management of land to reduce runoff and through harnessing the ability of wetlands to store water;
- Identifying areas suitable for inundation and water storage to reduce the risk of flooding elsewhere;
- Planning to roll back development in coastal areas to avoid damage from flooding or coastal erosion; and
- Creating sustainable drainage systems (SuDS).²³

4.6 Further guidance is provided in the document 'Planning for SuDS'.²⁴ This report calls for greater recognition of the multiple benefits that water management can present. It suggests that successful SuDS are capable of 'contributing to local quality of life and green infrastructure'.

²¹ Committee on Climate Change (2017): 'UK Adaptation Policy' [online] accessible via <<https://www.theccc.org.uk/tackling-climate-change/preparing-for-climate-change/uk-adaptation-policy/>> last accessed [25/11/19]

²² Flood and Water Management Act (2010) [online] available at: <<http://www.legislation.gov.uk/ukpga/2010/29/contents>> last accessed [25/11/19]

²³ N.B. The provision of Schedule 3 to the Flood and Water Management Act 2010 came into force on the 1st of October 2012 and makes it mandatory for any development in England or Wales to incorporate SuDs.

²⁴ CIRIA (2010) 'Planning for SuDs – making it happen' [online] available to access via <http://www.ciria.org/Resources/Free_publications/Planning_for_SuDS_ma.aspx> last accessed [25/11/19]

- 4.7 At the local level, policies within the 'Design' section of the Adopted Arun Local Plan 2018 directly relate to the Climate Change SEA theme.

Baseline Summary

Summary of Current Baseline

Contribution to climate change

- 4.8 In relation to greenhouse gas emissions, source data from the Department of Energy and Climate Change suggests that Arun has lower per capita emissions than West Sussex, the South East of England and England since 2005 (see **Table 4.1**). Arun has seen a 36.2% reduction in the percentage of total emissions per capita between 2005 and 2016, lower than the reductions for West Sussex (36.6%), the South East of England (36.7%) and England (37.6%).

Table 4.1: Carbon dioxide emissions and sources, plus emissions per capita, 2005-2016²⁵

	Industrial and Commercial (t CO ₂)	Domestic (t CO ₂)	Transport (t CO ₂)	Total (t CO ₂)
Arun				
2005	1.7	2.5	1.7	5.8
2006	1.7	2.5	1.6	5.7
2007	1.6	2.4	1.6	5.4
2008	1.5	2.4	1.6	5.3
2009	1.3	2.2	1.5	4.8
2010	1.5	2.4	1.5	5.1
2011	1.3	2.1	1.5	4.5
2012	1.5	2.3	1.4	4.8
2013	1.4	2.2	1.4	4.6
2014	1.2	1.9	1.4	4.0
2015	1.1	1.8	1.5	3.9
2016	1.0	1.7	1.6	3.7
West Sussex				
2005	2.5	2.6	2.4	7.1
2006	2.4	2.6	2.3	6.9
2007	2.4	2.5	2.3	6.7
2008	2.3	2.4	2.1	6.5
2009	2.1	2.2	2.1	5.9

²⁵ Department of Energy and Climate Change (2018) 2005 to 2016 UK local and regional CO₂ emissions – data tables [online] available at: <<https://www.gov.uk/government/statistics/uk-local-authority-and-regional-carbon-dioxide-emissions-national-statistics-2005-2016>> [accessed 25/11/19]

	Industrial and Commercial (t CO ₂)	Domestic (t CO ₂)	Transport (t CO ₂)	Total (t CO ₂)
2010	2.2	2.4	2.0	6.2
2011	2.0	2.0	2.0	5.6
2012	2.1	2.2	1.9	5.7
2013	1.9	2.1	1.9	5.5
2014	1.5	1.8	1.9	4.8
2015	1.6	1.7	1.9	4.8
2016	1.4	1.6	1.9	4.5
South East				
2005	3.0	2.5	2.6	7.9
2006	3.0	2.5	2.6	7.8
2007	2.8	2.4	2.6	7.6
2008	2.7	2.4	2.4	7.3
2009	2.4	2.2	2.3	6.6
2010	2.4	2.3	2.3	6.8
2011	2.2	2.0	2.2	6.2
2012	2.2	2.2	2.2	6.3
2013	2.1	2.1	2.1	6.1
2014	1.7	1.7	2.2	5.4
2015	1.6	1.7	2.2	5.3
2016	1.4	1.6	2.2	5.0
England				
2005	3.8	2.5	2.3	8.5
2006	3.8	2.5	2.2	8.4
2007	3.6	2.4	2.2	8.1
2008	3.5	2.4	2.1	7.8
2009	3.0	2.1	2.0	7.0
2010	3.0	2.3	2.0	7.2
2011	2.7	2.0	1.9	6.5
2012	2.9	2.1	1.9	6.8
2013	2.8	2.0	1.9	6.6

	Industrial and Commercial (t CO ₂)	Domestic (t CO ₂)	Transport (t CO ₂)	Total (t CO ₂)
2014	2.4	1.7	1.9	5.9
2015	2.3	1.6	1.9	5.7
2016	2.0	1.5	1.9	5.3

Potential effects of climate change

4.9 The outcome of research on the probable effects of climate change in the UK was released in 2018 by the UK Climate Projections (UKCP18) team²⁶. UKCP18 gives climate information for the UK up to the end of this century and projections of future changes to the climate are provided, based on simulations from climate models. Projections are broken down to a regional level across the UK and are shown in probabilistic form, which illustrate the potential range of changes and the level of confidence in each prediction.

4.10 As highlighted by the research, the effects of climate change (under medium emissions scenarios 50th percentile) for South East England during the period 2040-2059 compared to the period 1981-2000 are likely to be as follows²⁷:

- The central estimate of increase in annual mean temperatures of between 2°C and 3°C; and
- The central estimate of change in annual mean precipitation of +20 to +30% in winter and -10% to -20% in summer.

4.11 Resulting from these changes, a range of risks may exist for the Neighbourhood Plan area, including:

- Increased incidence of heat related illnesses and deaths during the summer;
- Increased incidence of illnesses and deaths related to exposure to sunlight (e.g. skin cancer, cataracts);
- Increased incidence of pathogen related diseases (e.g. legionella and salmonella);
- Increase in health problems related to rise in local ozone levels during summer;
- Increased risk of injuries and deaths due to increased number of storm events;
- Effects on water resources from climate change;
- Reduction in availability of groundwater for abstraction;
- Adverse effect on water quality from low stream levels and turbulent stream flow after heavy rain;
- Increased risk of flooding, including increased vulnerability to 1:100-year floods;
- Changes in insurance provisions for flood damage;
- A need to increase the capacity of wastewater treatment plants and sewers;
- A need to upgrade flood defences;
- Soil erosion due to flash flooding;
- Loss of species that are at the edge of their southerly distribution;

²⁶ The data was released on 26th November 2018: See: <<http://ukclimateprojections.metoffice.gov.uk/>> last accessed [25/11/19]

²⁷ Met Office (2018): 'Land Projection Maps: Probabilistic Projections', [online map] available to access via: <<https://www.metoffice.gov.uk/research/collaboration/ukcp/land-projection-maps>> last accessed [25/11/19]

- Spread of species at the northern edge of their distribution;
- Deterioration in working conditions due to increased temperatures;
- Changes to global supply chain;
- Increased difficulty of food preparation, handling and storage due to higher temperatures;
- An increased move by the insurance industry towards a more risk-based approach to insurance underwriting, leading to higher cost premiums for business;
- Increased demand for air-conditioning;
- Increased drought and flood related problems such as soil shrinkages and subsidence;
- Risk of road surfaces melting more frequently due to increased temperature; and
- Flooding of roads.

Flood risk

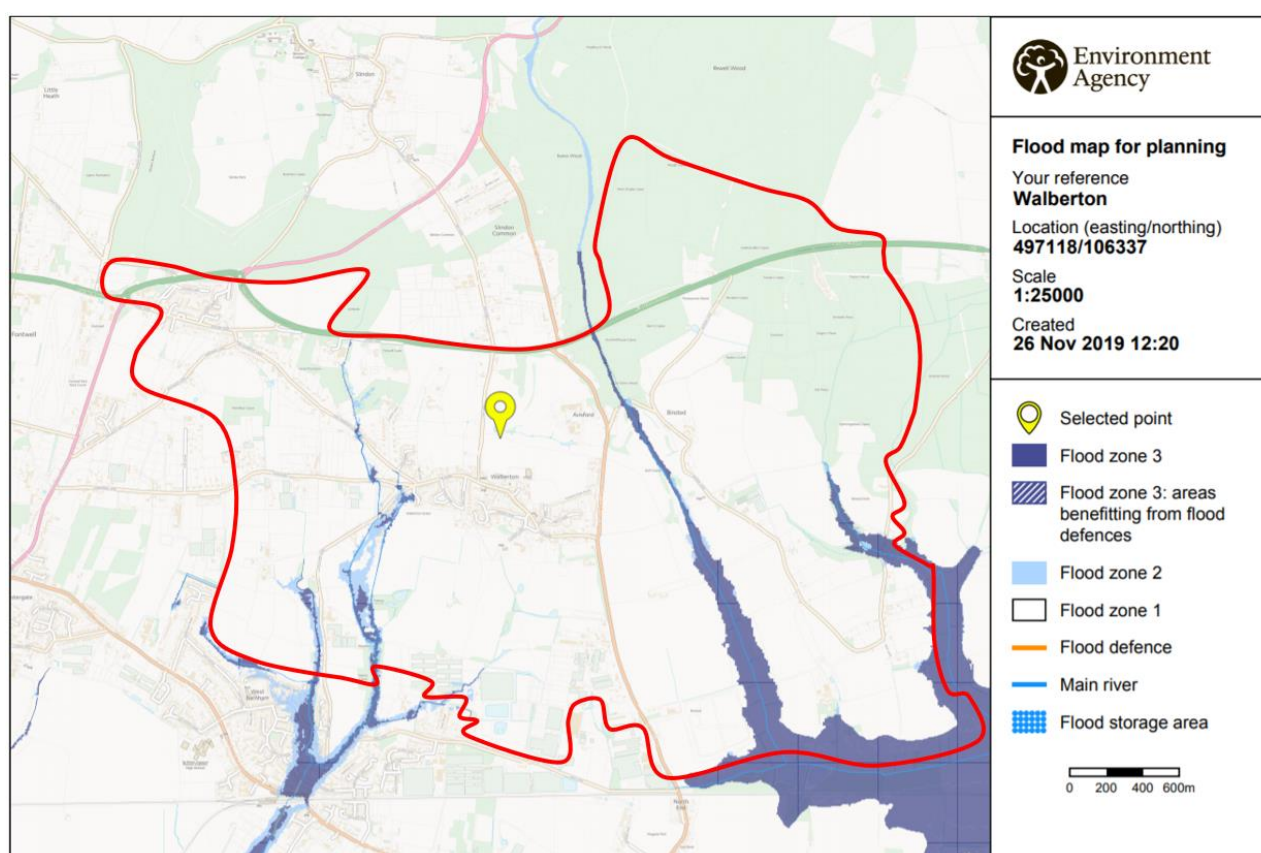


Figure 4-1: Fluvial flood risk within the Neighbourhood Plan area²⁸

4.12 A flood Management Plan was produced by the parish council at the request of the Environment Agency and Arun District Council following a series of historic flooding events within the parish of Walberton²⁹. In this respect, there is a corridor of land between Yapton Lane (B2132) and Binsted Lane, extending towards the A27 (Arundel Road) at the northern boundary of the Neighbourhood Plan area falls within Flood Zone 3. Sections of land south east of Walberton Parish, extending to the west of Walberton Village also fall within Flood Zone 3. These areas have a 1% (1 in 100) or greater annual flood risk. **Figure 4.1** (above) displays the flood risk areas present in the Neighbourhood Plan area.

²⁸ GOV UK (2019): 'Flood Map for Planning', [online] available to access via: <<https://flood-map-for-planning.service.gov.uk/>> accessed [26/11/19]

²⁹ Walberton Neighbourhood Development Plan (2016): [online] available to access via <https://www.southdowns.gov.uk/wp-content/uploads/2017/03/Walberton_Made-NDP.pdf> last accessed [27/11/19]

- 4.13 Surface water flooding is a risk within the Neighbourhood Plan area (Figure 4.2 below), primarily occurring after prolonged and exceptionally heavy rainfall. Surface water is carried into The Street via Copse Lane, Mill Lane, Field Close, North Pound and Tye Lane³⁰. The Environment Agency have identified approximately 60 properties in the area of Walberton Green and the pond as being at risk of flooding. Recent flooding events occurred during November 2010 and June, July and December 2012. The properties at risk of flooding are all privately owned homes.

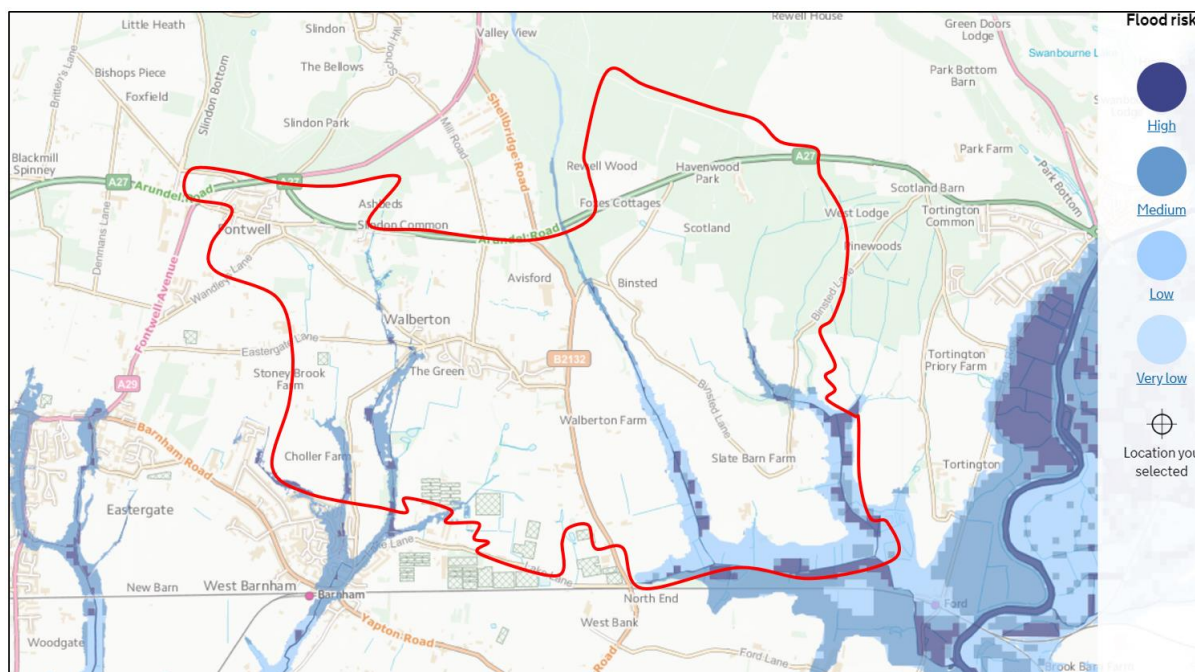


Figure 4-2: Surface water flood risk within the Neighbourhood Plan area³¹

- 4.14 The Lidsey Surface Water Management Plan³², completed in 2014 through a partnership between: West Sussex County Council; Southern Water; Arun District Council; and the Environment Agency, investigates and outlines priority actions to reduce flood risk within the Parish. Interventions include ditch clearance, the reduction of inflow and infiltration of foul sewers.
- 4.15 The West Sussex Local Flood Risk Management Strategy gives an overview of sources of flooding in the West Sussex area³³. In the Arun District the main source of fluvial flooding is the River Arun, Aldingbourne Rife and Ferring Rife. The strategy estimates around 700 properties are at risk of surface water and coastal flooding combined across Barnham and Walberton.
- 4.16 Completed in 2016, the Arun District Council Strategic Flood Risk Assessment highlights that there has been a series of flooding events in the Neighbourhood Plan area, with the most significant in 1993, 2000 to 2001 and 2002 to 2003 after heavy rainfall over an extensive period. The report also highlights that areas currently within Flood Zone 2 may become part of Flood Zone 3a in the future due to the effects of climate change³⁴.
- 4.17 Furthermore, the geology of the parish produces a high-water table. Land to the south of Walberton is low lying and causes water to flow through Barnham and Yapton via Barnham Rife

³⁰ Walberton Neighbourhood Development Plan (2016): [online] available to access via <https://www.southdowns.gov.uk/wp-content/uploads/2017/03/Walberton_Made-NDP.pdf> last accessed [27/11/19]

³¹ Environment Agency (2019): 'Long term flood risk map' [online] available to access via: <<https://flood-warning-information.service.gov.uk/long-term-flood-risk/map>> last accessed [30/08/19]

³² Lidsey Surface Water Management Plan (no date), [online] available to access via <http://www.walberton-pc.gov.uk/Evidence_Base.aspx> accessed [26/11/19]

³³ West Sussex County Council (2014) 'West Sussex Local Flood Risk Management Strategy (2013-2018)', [online] available at: <https://www.westsussex.gov.uk/media/1595/local_flood_risk_management_strategy.pdf> [accessed 17/09/19]

³⁴ Arun District Council (2016) 'Strategic Flood Risk Assessment', [online] available at: <https://www.arun.gov.uk/download.cfm?doc=docm93ijm4n9414.pdf&ver=9270> [accessed 16/09/19]

out to the flood plain. This surface water drainage route is one of the main pathways from The Downs to the sea; after heavy rainfall, the floodplain contains floodwater from the rifes.

- 4.18 In terms of the smaller villages within the parish boundary, some areas within Binsted are affected by flooding attributed to heavy rainfall and the presence of springs on the hillside below the Black Horse Pub. Fontwell is affected by flooding from heavy rainfall leading to the accumulation of standing water at Arundel Road. During 2014, Wandleys Lane and the junction of Fontwell Avenue were closed for 2 months as a result of flooding³⁵. Standing water following rain is a common occurrence at the western end of Arundel Road on the A27 roundabout despite numerous attempts to eradicate this potential traffic hazard.
- 4.19 High tides along the coast can cause groundwater levels to rise in parts of the parish.

Summary of Future Baseline

- 4.20 Climate change has the potential to increase the occurrence of extreme weather events in the Neighbourhood Plan area, with increases in mean summer and winter temperatures, increases in mean precipitation in winter and decreases in mean precipitation in summer. This is likely to increase the risks associated with climate change, with an increased need for resilience and adaptation.
- 4.21 In terms of climate change contribution, per capita greenhouse gas emissions generated in the Neighbourhood Plan area may continue to decrease with wider adoption of energy efficiency measures, renewable energy production and new technologies, including electric cars and busses. However, increases in the built footprint of the Neighbourhood Plan area would contribute to increases in the absolute levels of greenhouse gas emissions.

Key Sustainability Issues

- The effects of climate change, based on medium emission scenarios, will see an estimated increase in annual mean temperatures of between 2°C and 3°C during the period 2040-2059 compared to the period 1981-2000 in south east England.
- The estimated change in annual mean precipitation is +20 to +30% in winter and -10% to -20% in summer, during the period 2040-2059 compared to the period 1981-2000 in south east England.
- Any increases in the built footprint of the Neighbourhood Plan area (associated with the delivery of new housing and employment land) has the potential to increase overall greenhouse gas emissions in Walberton.
- Arun has seen a 36.2% reduction in the percentage of total emissions per capita between 2005 and 2016, lower than the reductions for West Sussex (36.6%), the South East of England (36.7%) and England (37.6%).
- Areas located in the south west and south east of Walberton Parish partly fall within Flood Zone 3 and have a 1% (1 in 100) or greater annual flood risk.
- The Environment Agency have identified approximately 60 properties in the area of Walberton Green and the pond as being at risk of flooding.
- Completed in 2016, the Arun District Council Strategic Flood Risk Assessment highlights that there has been a series of flooding events in the Neighbourhood Plan area.
- The Lidsey Surface Water Management Plan, completed in 2014, outlines priority actions to reduce flood risk within the Parish. Interventions include ditch clearance, the reduction of inflow and infiltration of foul sewers.

³⁵ Walberton Neighbourhood Development Plan (2016): [online] available to access via <https://www.southdowns.gov.uk/wp-content/uploads/2017/03/Walberton_Made-NDP.pdf> last accessed [27/11/19]

- The West Sussex Local Flood Risk Management Strategy estimates around 700 properties are at risk of surface water and coastal flooding combined across Barnham and Walberton.
- Surface water flooding is a risk within the Neighbourhood Plan area, principally in the south east region of the parish but traversing the whole length of the Neighbourhood Plan area.

What are the SEA objectives and appraisal questions for the Climate Change SEA theme?

SEA objective	Assessment Questions
Reduce the contribution to climate change made by activities within the Neighbourhood Plan area	<p>Will the option/proposal help to:</p> <ul style="list-style-type: none"> • Reduce the number of journeys made? • Reduce the need to travel? • Promote the use of sustainable modes of transport, including walking, cycling and public transport? • Increase the number of new developments meeting or exceeding sustainable design criteria? • Generate energy from low or zero carbon sources? • Reduce energy consumption from non-renewable resources?
Support the resilience of the Neighbourhood Plan area to the potential effects of climate change, including flooding	<p>Will the option/proposal help to:</p> <ul style="list-style-type: none"> • Ensure that inappropriate development does not take place in areas at higher risk of flooding, taking into account the likely future effects of climate change? • Improve and extend green infrastructure networks in the plan area to support adaptation to the potential effects of climate change? • Sustainably manage water run-off, reducing surface water runoff (either within the plan area or downstream)? • Ensure the potential risks associated with climate change are considered through new development in the Neighbourhood Plan area? • Increase the resilience of biodiversity in the area to the effects of climate change, including through enhancements to ecological networks?

5. Landscape

Focus of Theme

- Internationally and nationally protected landscapes
- Landscape and townscape character and quality
- Designated and non-designated sites and areas
- Visual amenity

Policy Context

5.1 Key messages from the National Planning Policy Framework (NPPF) include:

- *'Great weight should be given to conserving and enhancing landscape and scenic beauty in National Parks, the Broads and Areas of Outstanding Natural Beauty [...]. The conservation and enhancement of wildlife and cultural heritage are also important considerations in these areas and should be given great weight in National Parks and the Broads. The scale and extent of development within these designated areas should be limited.'*
- *Strategic policies should set out an overall strategy making provision for 'conservation and enhancement of the natural, built and historic environment, including landscapes and green infrastructure.'*
- *Planning policies and decisions should ensure that developments 'are sympathetic to local character and history, including the surrounding built environment and landscape setting, while not preventing or discouraging appropriate innovation of change (such as increased densities).'*
- *'Planning policies and decisions should contribute to and enhance the natural and local environment by:*
 - protecting and enhancing valued landscapes, sites of biodiversity or geological value and soils*
 - recognising the intrinsic character and beauty of the countryside, and the wider benefits from natural capital and ecosystem services – including the economic and other benefits of the best and most versatile agricultural land, and of trees and woodland; and*
 - remediating and mitigating despoiled, degraded, derelict, contaminated and unstable land, where appropriate.'*

5.2 As listed within the South Downs National Park Partnership Management Plan, the general policies for conservation for this nationally protected landscape are as follows³⁶:

- Policy 1: Conserve and enhance the natural beauty and special qualities of the landscape and its setting, in ways that allow it to continue to evolve and become more resilient to the impacts of climate change and other pressures.
- Policy 2: Develop landscape-scale partnerships and initiatives to focus on enhancing the key ecosystem services delivered by the National Park.
- Policy 3: Protect and enhance tranquillity and dark night skies.
- Policy 4: Create more, bigger, better-managed and connected areas of habitat in and around the National Park, which deliver multiple benefits for people and wildlife.

³⁶ South Downs National Park Authority (2013) 'South Downs National Park Partnership Management Plan', [online] available at: <https://www.southdowns.gov.uk/wp-content/uploads/2015/01/SDNP-Partnership-Management-Plan-2014-19.pdf> [accessed 16/09/19]

- Policy 5: Conserve and enhance populations of priority species in and around the National Park, delivering targeted action where required.
- Policy 6: Favour natural functions and processes in and around the National Park where they support the value and resilience of terrestrial, freshwater, marine, coastal and estuarine habitats.
- Policy 7: Actively promote more joined-up and sustainable management of the coast, including the defined area of the Sussex Heritage Coast, through Integrated Coastal Zone Management (ICZM).
- Policy 8: Focus the prevention, control and eradication of invasive non-native species on those that are most harmful to biodiversity.
- Policy 9: The significance of the historic environment is protected from harm; new discoveries are sought and opportunities to reveal its significance are exploited.
- Policy 10: Improve the management of heritage assets, particularly focusing on those that are 'at risk', including from crimes against heritage.

5.3 At the local level, policies within the 'Settlement Structure & Green Infrastructure' section and the 'Natural Environment' sections of the Adopted Arun Local Plan 2018 directly relate to the Landscape SEA theme.

Baseline Summary

Summary of Current Baseline

South Downs National Park

5.4 The South Downs National Park is located within the north east part of the parish and lies both north and south of the A27. Designated in 2009, the SDNP is one of England's newest national parks, and covers an area of approximately 1,653 km². The park contains a "rich mosaic of habitats", including ancient woodland, heathland ridges, river valleys, chalk cliffs and farmland³⁷.

5.5 The South Downs National Park Authority highlights the following as the defined special qualities of the National Park:

- Diverse, inspirational landscapes and breath-taking views;
- A rich variety of wildlife and habitats including rare and internationally important species;
- Tranquil and un-spoilt places;
- An environment shaped by centuries of farming and embracing new enterprise;
- Great opportunities for recreational activities and learning experiences;
- Well-conserved historical features and a rich cultural heritage; and
- Distinctive towns and villages, and communities with real pride in their area.

National Character Areas

5.6 National Character Areas (NCAs) are landscape areas which share similar characteristics, following natural lines in the landscape rather than administrative boundaries. Developed by Natural England, NCA profiles describe the natural and cultural features that shape each of these landscapes, providing a broad context to their character. The Neighbourhood Plan area is within the South Coast Plain NCA, with a small area of land to the north east of the parish located within the South Downs NCA (overlapping with the National Park).

³⁷ South Downs National Park Authority (2013) 'South Downs National Park Partnership Management Plan', [online] available at: <https://www.southdowns.gov.uk/wp-content/uploads/2015/01/SDNP-Partnership-Management-Plan-2014-19.pdf> [accessed 16/09/19]

5.7 The NCA profile for the 'South Coast Plain'³⁸ lists several key characteristics, with the following of relevance to the Neighbourhood Plan area:

- The underlying geology of flinty marine and valley gravels extends for several miles inland to the dip slope of the South Downs and the South Hampshire Lowlands. This gives rise to deep and well-drained high-quality soils;
- In places, streams and rivers flow from the higher land of the Downs to the sea; and
- There are stretches of farmed land between developed areas, often with large arable fields defined by low hedges or ditches.

5.8 Implemented in October 2005 by West Sussex County Council, the 'Strategy for the West Sussex Landscape'³⁹ aims to protect and enhance the landscape as an asset for future generations, outlining visions for the five national character areas (NCAs) which characterise the county. In the context of the Neighbourhood Plan area, the vision statements for the 'South Coast Plan' are to ensure that:

- High-quality new development is well-integrated with existing towns and the wider landscape;
- The urban fringe combines a distinctive landscape character (including a combination of open spaces, woodlands, and hedgerows) with well-managed land uses which benefit residents and visitors in town and country alike;
- A strong network of woodlands and hedgerows forms green corridors within the gaps between the coastal towns, providing informal recreational opportunities and helping to connect the towns and their residents within the wider landscape;
- Productive farmland and permitted horticultural uses are set within a strong landscape framework of woodlands, shelterbelts and hedgerows. Agriculture adopts sympathetic farming and land management methods, contributing to landscape renewal and biodiversity, including conserving wetlands and pastureland;
- Extensive new areas of mudflats, salt marsh and coastal grazing marsh are established within coastal inlets, as an important part of coastal retreat schemes;
- The historic and inspiring long views so characteristic of the coastal plain, to Chichester Cathedral and its downland backdrop, to other church towers and spires, to Arundel and its castle and cathedral, and from the coast to the downs, are maintained; and
- The local distinctiveness of villages and their settings continues to be evident, with a return to the greater availability and use of traditional local materials.

Local Landscape Character

5.9 Landscape character plays an important part in understanding the relationship between people and place, identifying recognisable and distinct patterns in the landscape which make one area different from another. Landscape character can assist in the assessment of the likely significance of effects of change resulting from development and the value of landscape, both in visual and amenity terms.

5.10 Completed in 2003, the Arun Landscape Study identifies landscape types and areas at an appropriate scale to understand the localised variation in character with the objective of providing the framework for the assessment of sensitivity, value and capacity. The Study classifies the Neighbourhood Plan area into three distinctive Landscape Character Areas (LCA), with a summary of their key characteristics, sensitivities and capacities provided below.

³⁸ Natural England (2014): 'NCA Profile: 126 South Coast Plain (NE525)', [online] available to download via: <http://publications.naturalengland.org.uk/publication/4923911250640896?category=587130> last accessed [19/08/19]

³⁹ West Sussex County Council (2005): 'Strategy for the West Sussex Landscape', [online] available to download via: <https://www.westsussex.gov.uk/land-waste-and-housing/landscape-and-environment/landscape-character-assessment-of-west-sussex/> last accessed [19/08/19]

- SC8 Fontwell Upper Coastal Plain: A transitional landscape between the open lower coastal plain to the south and the wooded Downs to the north. The land is very undulating and encompasses the distinctive landscape of Binsted Valley⁴⁰.
- SC9 Chichester to Yapton Coastal Plain: A low lying flat open landscape with meandering rifees and straight drainage systems. The area extends from Chichester in the west to the edge of the Arun Valley in the east and around Bognor Regis in the south. The land is dominated by productive arable fields and modern farm buildings with fragmented hedgerows and trees⁴¹.
- SD1 Western Downs: A large area of rolling chalk uplands combined with woodland, farmland and commercial plantations with dense copses and hedgerows. The area extends west from Harting Down and Stansted Forest to Arundel Park in the east. The landscape contains enclosed valleys with panoramic views over the downland⁴².

Tree Preservation Orders

5.11 Implemented by local planning authorities, Tree Preservation Orders (TPOs) are designated to protect specific trees, groups of trees or woodlands in the interests of their amenity value. When considering 'amenity'; the local planning authority will likely take into consideration the following criteria⁴³:

- Visibility: the extent to which the trees or woodlands can be seen by the public; and
- Individual, collective and wider impact: considering the importance of the trees or woodlands in relation to their cultural or historic value, contribution to and relationship with the landscape and/or their contribution to the character or appearance of a conservation area.

5.12 In this context, Arun District Council have allocated several TPOs within the Neighbourhood Plan area, shown below in **Figure 5A** and **Figure 5B**, represented by a red crosshatch section⁴⁴.

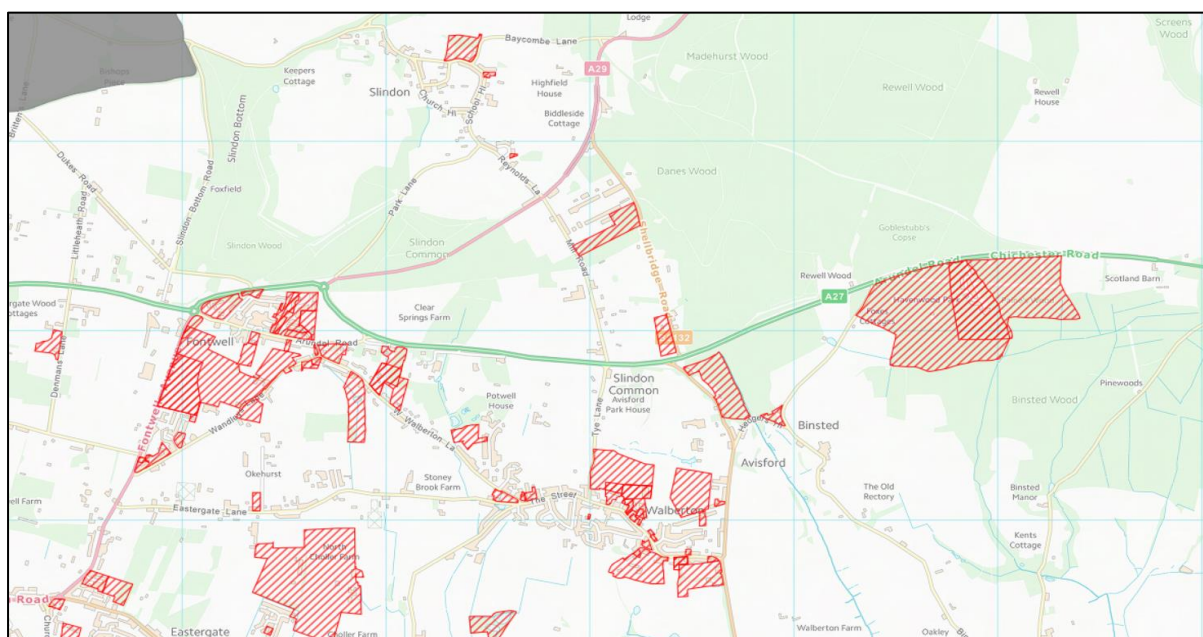


Figure 5A: TPOs in the northern half of the Neighbourhood Plan area

⁴⁰ West Sussex Land Management Guidelines 'SC6, SC7, SC8' (no date) [online] available to access via <http://www2.westsussex.gov.uk/environment/heritage/SC6_UpperCoastal.pdf> last accessed [29/11/19]

⁴¹ West Sussex Land Management Guidelines 'SC9' (no date) [online] available to access via <http://www2.westsussex.gov.uk/environment/heritage/SC9_ChichesterYapton.pdf> last accessed [29/11/19]

⁴² West Sussex Land Management Guidelines 'SD1' (no date) [online] available to access via <http://www2.westsussex.gov.uk/environment/heritage/SD1_Western_Downs.pdf> last accessed [29/11/19]

⁴³ GOV.UK (2014): 'Tree Preservation Orders – General', [online] available to access via: <<https://www.gov.uk/guidance/tree-preservation-orders-and-trees-in-conservation-areas>> last accessed [16/04/19]

⁴⁴ Arun District Council (2019) Tree Preservation Orders GIS Map. [online] available to access via: <<https://www1.arun.gov.uk/webapps/wml/>> last accessed [27/11/19]

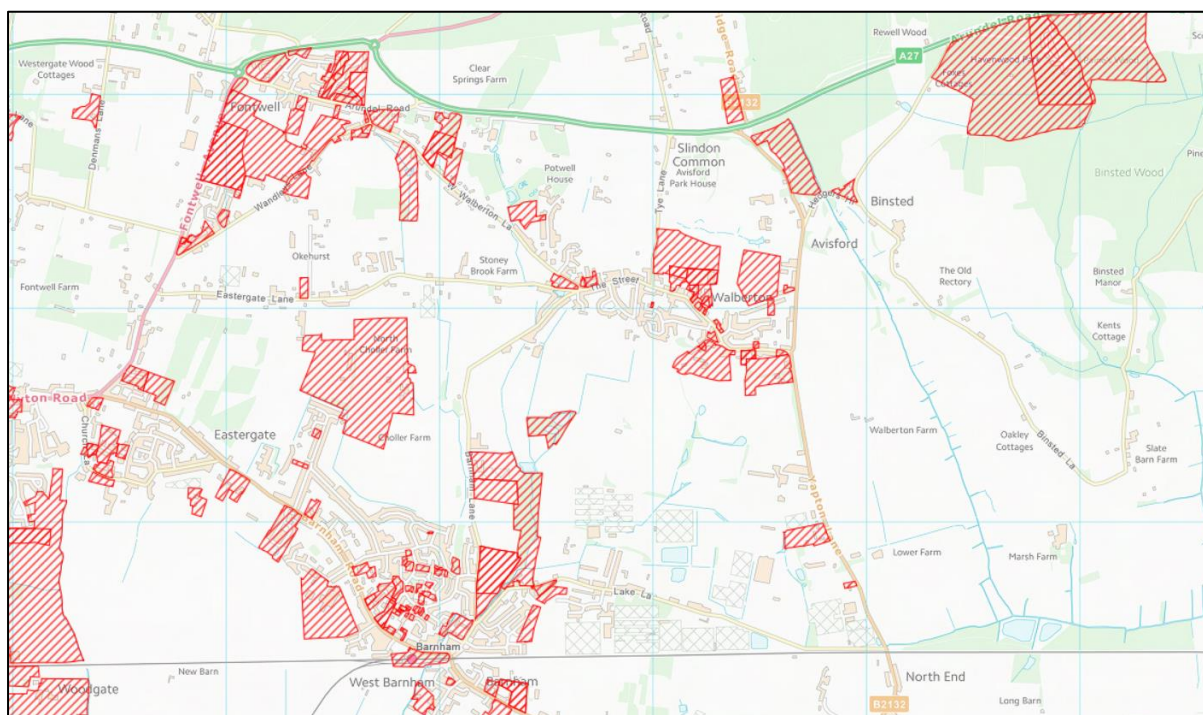


Figure 5B: TPOs in the southern half of the Neighbourhood Plan area

Visual Amenity

5.13 The views across the Parish are an important consideration in the planning process as the scale, height and mass of development can ultimately impact important views if they are not considered and assessed through the process. Changes, such as development and landscape change can see these views degraded overtime.

5.14 **Figure 5.1** (overleaf) shows the landscape designations within the Neighbourhood Plan area.

Summary of Future Baseline

5.15 New development has the potential to lead to incremental but small changes in landscape and villagescape character and quality in and around the Neighbourhood Plan area. This includes from the loss of landscape features and areas with an important visual amenity value.

5.16 In the absence of the plan, inappropriate levels of development within the open countryside could negatively impact upon the landscape features which contribute to the distinctive character and setting of the Neighbourhood Plan area, along with the special qualities of the South Downs National Park and the three LCAs.

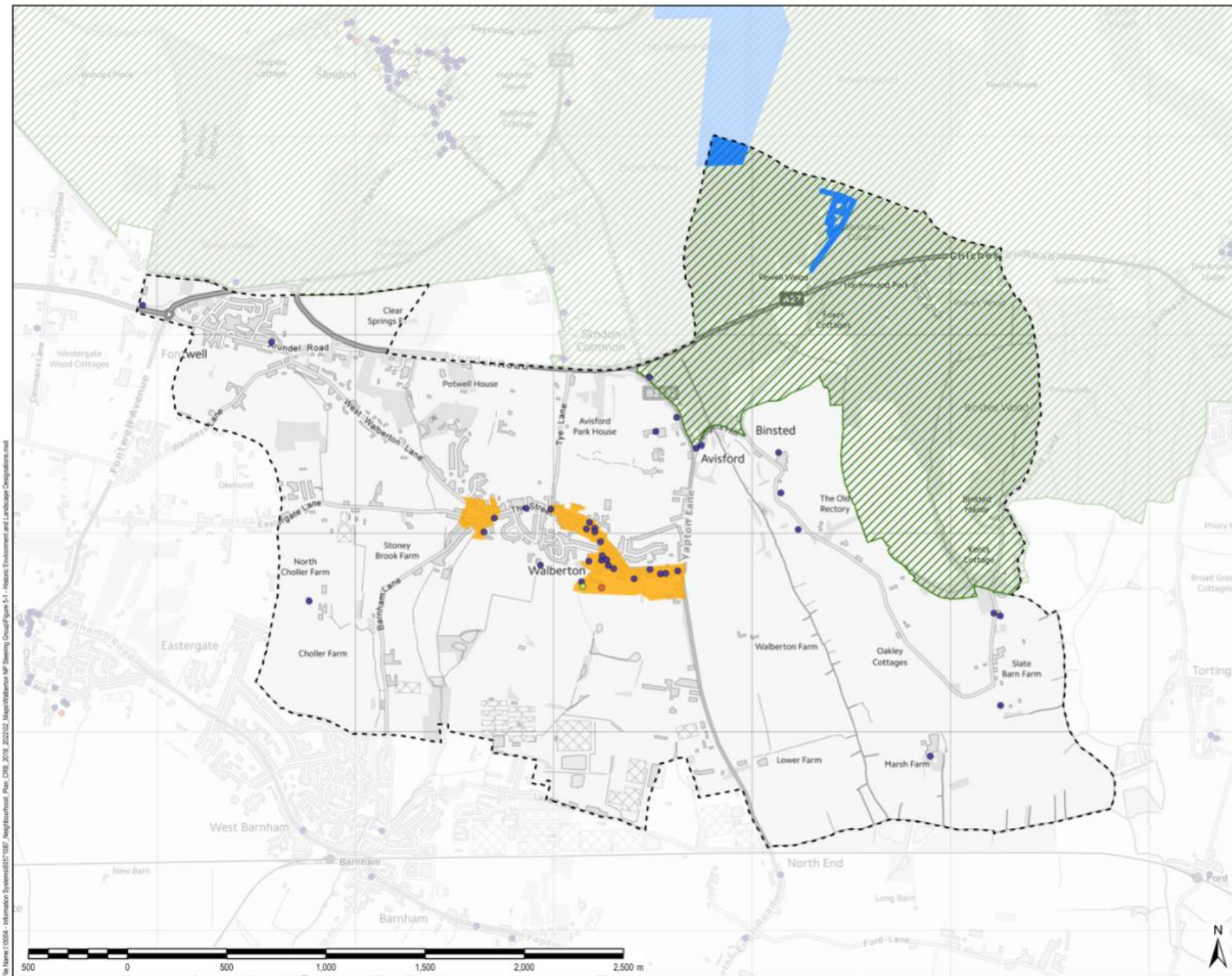
Key Sustainability Issues

- The South Downs National Park overlaps with the north east section of the Neighbourhood Plan area, containing several special qualities which classify its distinctiveness and value.
- The Neighbourhood Plan area is in the South Coast Plain NCA, with a small area of land to the north east of the parish located in the South Downs NCA (overlapping with the National Park).
- The 'Strategy for the West Sussex Landscape' aims to protect and enhance the landscape as an asset for future generations, outlining visions and objectives for the five (NCAs) which characterise the county, including the South Coast Plan NCA.
- There are three LCAs within the Neighbourhood Plan area, with the Arun Landscape Study outlining several key features which contribute to their distinctiveness.

- Arun District Council have allocated several TPOs in the Neighbourhood Plan area in the interest of their amenity value.
- The views across the Neighbourhood Plan area are an important consideration in the planning process as the scale, height and mass of development can ultimately impact important views if they are not considered and assessed through the process.

What are the SEA objectives and appraisal questions for the Landscape SEA theme?

SEA objective	Assessment Questions
Protect and enhance the character and quality of landscapes and villagescapes.	<p>Will the option/proposal help to:</p> <ul style="list-style-type: none"> • Conserve and enhance the natural beauty and special qualities of the South Downs National Park, in line with the Partnership Management Plan and Local Plan? • Conserve and enhance locally important landscape and villagescape features within the Neighbourhood Plan area? • Conserve and enhance local diversity and character? • Protect locally important viewpoints contributing to the sense of place and visual amenity of the Neighbourhood Plan area?



THIS DRAWING IS TO BE USED ONLY FOR THE PURPOSE OF ISSUE THAT IT WAS ISSUED FOR AND IS SUBJECT TO AMENDMENT

LEGEND

- Walberton Neighbourhood Plan Area
- Record of Scheduled Monument
- Conservation Area
- South Downs National Park

Listed Building

- Grade I
- Grade II*
- Grade II

Copyright
 Contains Ordnance Survey Data © Crown Copyright and database right 2019
 © Historic England 2019. Contains Ordnance Survey data © Crown copyright and database right 2019 The Historic England GIS Data contained in this material was obtained on 03/12/2019
 © Natural England material is reproduced with the permission of Natural England 2019
 © Crown Copyright and database rights 2014 Ordnance Survey 100018487

Phase of Issue: **FINAL**

Client: **WALBERTON NEIGHBOURHOOD PLAN STEERING GROUP**

Project Title: **STRATEGIC ENVIRONMENTAL ASSESSMENT FOR THE WALBERTON NEIGHBOURHOOD PLAN**

Drawing Title: **HISTORIC ENVIRONMENT AND LANDSCAPE DESIGNATIONS**

Drawn: CN	Checked: JH	Approved: JP	Date: 03/12/2019
AECOM Internal Project No: 60571087		Scale @ A3: 1:17,500	

THIS DOCUMENT HAS BEEN PREPARED PURSUANT TO AND IS SUBJECT TO THE TERMS OF AECOM'S AGREEMENT WITH ITS CLIENT. AECOM ACCEPTS NO LIABILITY FOR ANY USE OF THIS DOCUMENT OTHER THAN BY ITS ORIGINAL CLIENT OR FOLLOWING AECOM'S EXPRESS AGREEMENT TO SUCH USE, AND ONLY FOR THE PURPOSES FOR WHICH IT WAS PREPARED AND PROVIDED.

AECOM
 Soil from
 Amber Lane, Basingstoke
 Hampshire RG24 0NR
 Telephone 01256 310000
 Fax 01256 310001
 www.aecom.com

Drawn/Issue: **FIGURE 5.1**

Rev: **01**

File Name: I:\0204 - Informatica Systems\6571087 - Neighbourhood Plan_CDR_2019_202302_Map\Walberton MP Steering Group\Figure 5.1 - Historic Environment and Landscape Designations.mxd

6. Historic Environment

Focus of Theme

- Designated and non-designated heritage assets
- Setting, special qualities and significance of heritage assets
- Locally important heritage assets
- Historic character of the Neighbourhood Plan area

Policy Context

6.1 Key messages from the National Planning Policy Framework (NPPF) include:

- Heritage assets should be recognised as an *'irreplaceable resource'* that should be conserved in a *'manner appropriate to their significance'*, taking account of *'the wider social, cultural, economic and environmental benefits'* of conservation, whilst also recognising the positive contribution new development can make to local character and distinctiveness.
- Plans should set out a *'positive strategy'* for the *'conservation and enjoyment of the historic environment'*, including those heritage assets that are most at risk.
- *'When considering the impact of a proposed development on the significance of a designated heritage asset, great weight should be given to the asset's conservation (and the more important the asset, the greater the weight should be). This is irrespective of whether any potential harm amounts to substantial harm, total loss or less than substantial harm to its significance.'*

6.2 The policies contained within Chapter 2 'Recovering nature and enhancing the beauty of landscapes' and Goal 6 'Enhanced beauty, heritage and engagement with the natural environment' of the Government's 'A Green Future: Our 25 Year Plan to Improve the Environment' directly relates to the Landscape and Historic Environment SEA theme.

6.3 The Government's Statement on the Historic Environment for England⁴⁵ sets out its vision for the historic environment. It calls for those who have the power to shape the historic environment to recognise its value and to manage it in an intelligent manner in light of the contribution that it can make to social, economic and cultural life.

6.4 Historic England is the statutory body that helps people care for, enjoy and celebrate England's spectacular historic environment. Guidance and advice notes provide essential information for local planning authorities, neighbourhood groups, developers, consultants, landowners and other interested parties on historic environment considerations, and are regularly reviewed and updated in light of legislative changes. The following guidance and advice notes are particularly relevant and should be read in conjunction with the others.

6.5 Conservation Area Designation, Appraisal and Management: Historic England Advice Note 1 (February 2016)⁴⁶ outlines ways to manage change that conserves and enhances historic areas in order to positively contribute to sustainable development. Principally, the advice note emphasises the importance of:

⁴⁵ HM Government (2010) The Government's Statement on the Historic Environment for England [online] available at: <http://webarchive.nationalarchives.gov.uk/+http://www.culture.gov.uk/reference_library/publications/6763.aspx> last accessed [20/0918]

⁴⁶ Historic England (2016): 'Conservation Area Designation, Appraisal and Management: Advice Note 1', [online] available to download via: <<https://historicengland.org.uk/images-books/publications/conservation-area-designation-appraisal-management-advice-note-1/>> last accessed [11/12/18]

- Understanding the different types of special architectural and historic interest which underpin the designations; and
 - Recognising the value of implementing controls through the appraisal and/or management plan which positively contribute to the significance and value of conservation areas.
- 6.6 Sustainability Appraisal (SA) and Strategic Environment Assessment (SEA): Historic England Advice Note 8 (December 2016)⁴⁷ provides support to all stakeholders involved in assessing the effects of certain plans and programmes on the historic environment. It offers advice on heritage considerations during each stage of the SA/SEA process and helps to establish the basis for robust and comprehensive assessments.
- 6.7 Historic Environment Good Practice Advice in Planning Note 3: The Setting of Heritage Assets (2nd Edition) (December 2017)⁴⁸ provides general advice on understanding setting, and how it may contribute to the significance of heritage assets and allow that significance to be appreciated, as well as advice on how views can contribute to setting. Specifically, Part 2 of the advice note outlines a five stepped approach to conducting a broad assessment of setting:
- Step 1: Identify which heritage assets and their settings are affected;
 - Step 2: Asses the degree to which these settings make a contribution to the significance of the heritage asset(s) or allow significance to be appreciated;
 - Step 3: Assess the effects of the proposed development, whether beneficial or harmful, on that significance or on the ability to appreciate it;
 - Step 4: Explore ways to maximise enhancement and avoid or minimise harm; and
 - Step 5: Make and document the decision and monitor outcomes.
- 6.8 Neighbourhood Planning and the Historic Environment: Historic England Advice Note 11 (October 2018)⁴⁹ outlines the importance of considering the historic environment whilst preparing the plan (section 1), which culminates in a checklist of relevant of issues to consider, followed by an overview of what this means in terms of evidence gathering (section 2). Sections 3 to 5 of the advice note focus on how to translate evidence into policy, understand the SEA process and Historic England's role in neighbourhood planning.
- 6.9 At the local level, policies within the 'Building Conservation & Archaeological Heritage' section of the Adopted Arun Local Plan 2018 directly relate to the Historic Environment SEA theme.

Baseline Summary

Summary of Current Baseline

Historic Character of Walberton

- 6.10 Walberton is the largest of the three villages and is located between Binsted and Fontwell. Development is focussed either side of The Street resulting in an essentially linear assemblage of buildings. Key village hubs include St Mary's Church, local shops, the village green and the pond. Walberton is characterised by a diversity of housing types and ages, with no single dominant architectural style. Several of the buildings are known to be of historic or architectural interest, including St Mary's Church. Flint walls are prevalent throughout the parish (particularly within the built-up area boundaries).

⁴⁷ Historic England (2016): 'SA and SEA: Advice Note 8' [online] available to download via: <https://historicengland.org.uk/images-books/publications/sustainability-appraisal-and-strategic-environmental-assessment-advice-note-8/> last accessed [11/12/18]

⁴⁸ Historic England (2017): 'Setting of Heritage Assets: 2nd Edition', [online] available to download via: <https://historicengland.org.uk/images-books/publications/gpa3-setting-of-heritage-assets/> last accessed [11/12/18]

⁴⁹ Historic England (2018): 'Neighbourhood Planning and the Historic Environment', [online] available to download via: <https://historicengland.org.uk/images-books/publications/neighbourhood-planning-and-the-historic-environment/> last accessed [11/12/18]

- 6.11 Containing the lowest population of the three villages, and dating back to the Anglo-Saxon period, Binsted has a markedly distinct historic character with open views and large woodland, comprising some of the best countryside in the parish⁵⁰. The village is fragmentally separated from Walberton to the east along Hedgers Hill, and the buildings are widely dispersed, although mostly along a single road⁵¹. There is a small Norman church dedicated to St Mary and a pub/restaurant, but no modern publicly accessible amenities.
- 6.12 Named after the pre-Roman freshwater springs, Fontwell has undergone considerable demographic change in recent years due to new housing development. Fontwell is a more compact settlement compared to Binsted and is linked to Walberton by a series of residential properties. The village has lost several amenities over the years, including its surgery and pub⁵².

Designated Heritage Assets

Listed Buildings

- 6.13 Historic England is the statutory consultee for certain categories of listed building consent and all applications for scheduled monument consent. The historic environment is protected through the planning system, via conditions imposed on developers and other mechanisms. The Neighbourhood Plan area contains 38 Grade II and one Grade I nationally designated listed buildings⁵³ which are protected through the Listed Buildings and Conservation Areas Act 1990. The Grade I listed building is 'The Parish Church of St Mary', which was designated in 1958.

Scheduled Monuments

- 6.14 Scheduled monuments are sites of national importance and protected by the Ancient Monuments and Archaeological Areas Act 1979. According to the National Heritage List for England⁵⁴, there are two scheduled monuments within the Neighbourhood Plan area, namely: 'Goblestubs Copse Earthworks' designated in 1933, of Iron Age or Roman origin, and located north east of the parish; and, 'Madehurst Wood Earthworks' designated in 1933, with early medieval origins, and partially located on the northern boundary of the parish.

Conservation Areas

- 6.15 Conservation Areas are designated because of their special architectural and historic interest. Conservation Area appraisals are a tool to demonstrate the area's special interest, explaining the reasons for designation and providing a greater understanding and articulation of its character - mentioned within the 'Conservation Area Designation, Appraisal and Management' advice note by Historic England⁵⁵. Ideally, appraisals should be regularly reviewed as part of the management of the Conservation Area and can be developed into a management plan. In this context, there are two designated conservation areas within the Neighbourhood Plan area: the 'Walberton Village' and 'Walberton Green' conservation areas, designated in November 1990. The conservation areas hold a distinct identity and contain the majority of the parishes listed buildings in addition to attractive historic boundary walling⁵⁶.

⁵⁰ Walberton Neighbourhood Development Plan (2017): [online] available to access via: <https://www.southdowns.gov.uk/wp-content/uploads/2017/03/Walberton_Made-NDP.pdf> last accessed [28/11/19]

⁵¹ British History Online (BHO) (no date): [online] available to access via <<https://www.british-history.ac.uk/vch/sussex/vol5/pt1/pp117-125>> last accessed [27/11/19]

⁵² Walberton Neighbourhood Development Plan (2017): [online] available to access via: <https://www.southdowns.gov.uk/wp-content/uploads/2017/03/Walberton_Made-NDP.pdf> last accessed [28/11/19]

⁵³ Walberton Parish Council 'Listed Buildings in Walberton, Binsted and Fontwell' (no date): [online] available to access via <http://www.walberton-pc.gov.uk/Listed_Buildings_in_Walberton_Binsted_Fontwell.aspx> last accessed [28/11/19]

⁵⁴ Historic England: National Heritage List for England: [online] available at <<http://list.historicengland.org.uk>> last accessed [22/09/19]

⁵⁵ Historic England (2016): 'Conservation Area Designation, Appraisal and Management Advice Note 1', [online] available to download from: <<https://www.historicengland.org.uk/images-books/publications/conservation-area-designation-appraisal-management-advice-note-1/>> last accessed [20/09/18]

⁵⁶ Arun District Council 'Conservation Areas' – Supplementary Planning Guidance (2000): [online] available to access via <<https://www.arun.gov.uk/download.cfm?doc=docm93ijm4n1722.pdf&ver=1371>> [last accessed 28/11/19]

- 6.16 It is important to note that a conservation area appraisal has not been prepared for 'Walberton Village' and 'Walberton Green' specifically, and therefore it is not currently possible to gain an in-depth understanding of the special interest of the areas. However, in light of the absence of detailed appraisals and management plans, a decision was made Arun District Council to focus on an overarching management plan for all the conservation areas across the district⁵⁷. Produced in 2014, the plan outlines key aims and objectives to preserve the unique character and historic features present within the district.
- 6.17 The overarching aim of the conservation areas management plan is: "to focus the attention of all of the agencies, organisation and individuals who live and work in the Conservation Areas, on the need for appropriate standards that reflect the special nature and character of these areas, whilst also encouraging practices and procedures that allow those standards to be achieved".

Heritage at Risk

- 6.18 Since 2008, Historic England has released an annual Heritage at Risk Register. The Heritage at Risk Register highlights the Grade I and Grade II* listed buildings, scheduled monuments, historic parks and gardens, registered battlefields, wreck sites and conservation areas deemed to be 'at risk'. According to the 2019 Heritage at Risk Register for South East England⁵⁸ none of the heritage assets within or adjacent to the Neighbourhood Plan area considered to be 'at risk'.
- 6.19 However, it is important to recognise that the Heritage at Risk Registers for areas outside of London do not contain information about the status of Grade II listed buildings. As such, it is currently not possible to determine whether the Grade II listed building within the Neighbourhood Plan is at risk.
- 6.20 **Figure 5.1** (above) shows the location of the scheduled monuments, listed buildings, and conservation area within the Neighbourhood Plan area.

Locally Important Heritage Features

- 6.21 It should be noted that not all the area's historic environment features are subject to statutory designations, and non-designated features comprise a large part of what people have contact with as part of daily life – whether at home, work or leisure. Although not designated, many buildings and areas are of historic interest and are important by local communities. For example, open spaces and key distinctive buildings in the area are likely to be of value for local people. Similarly, the parish has several locally distinctive flint walls within the built-up area boundaries which contribute to the sense of place.
- 6.22 Following a high-level review of the Historic Environmental Record (HER) for West Sussex (accessed via the Heritage Gateway)⁵⁹, there are 30 records within Walberton Parish recognising non listed distinctive buildings or features for their importance in contributing to the local distinctiveness and sense of place (outlined in **Table 6.1** below).

Table 6-1: Non-listed distinctive buildings or features within the Walberton parish⁶⁰

Title	Location	Description
<u>WALBERTON HOUSE</u>	West Sussex	House constructed in 1817 by Robert Prime, Architect Robert Smirke.
<u>MONUMENT NO. 248860</u>	West Sussex	Linear earthwork.

⁵⁷ Arun District Council Conservation Areas Management Plan (2014) [online] available to access via <<https://www.arun.gov.uk/download.cfm?doc=docm93jijm4n7349.pdf&ver=7083>> last accessed [12.2019]

⁵⁸ Historic England (2019): 'Heritage at Risk Register for South East England', [online] available to download at: <<https://historicengland.org.uk/images-books/publications/har-2019-registers/>> last accessed [10/12/19]

⁵⁹ Heritage Gateway (2019): Historic Environmental Record for West Sussex', [online] available to access via: <<http://www.heritagegateway.org.uk/gateway/>> last accessed [02/09/19]

⁶⁰ Heritage Gateway (2019): Historic Environmental Record (HER) for West Sussex', [online] available to access via: <<http://www.heritagegateway.org.uk/gateway/>> last accessed [02/09/19]

<u>MONUMENT NO. 248921</u>	West Sussex	Earthwork enclosures - probably Medieval sheep walks or pastoral enclosures.
<u>MONUMENT NO. 248928</u>	West Sussex	A Roman cist containing cremation burials was found in 1817. Eighteen vessels of glass and pottery
<u>MONUMENT NO. 248949</u>	West Sussex	EIA potsherd and flint knife
<u>MONUMENT NO. 248954</u>	West Sussex	Flint arrowhead
<u>MONUMENT NO. 248958</u>	West Sussex	A Palaeolithic implement, probably a handaxe, was found in 1929 by the road side near Avisford
<u>MONUMENT NO. 248963</u>	West Sussex	Pre-Conquest gable cross removed from the west gable of St Mary's Church in 1903
<u>MONUMENT NO. 248966</u>	West Sussex	10thC gravestone or coffin slab
<u>MONUMENT NO. 248984</u>	West Sussex	Md pottery
<u>MONUMENT NO. 248987</u>	West Sussex	A collection of Mesolithic flints from Marsh Farm.
<u>MONUMENT NO. 248990</u>	West Sussex	Neolithic polished axe
<u>MONUMENT NO. 248993</u>	West Sussex	Prob IA/R.B pottery
<u>MONUMENT NO. 248996</u>	West Sussex	Earthworks-prob Md pastoral enclosures
<u>BINSTED DMV?</u>	West Sussex	Deserted Medieval Village
<u>MONUMENT NO. 1503439</u>	West Sussex	Part of a probable Later Prehistoric double pit alignment visible on aerial photographs
<u>MANOR FARMHOUSE</u>	West Sussex	Post-Mediaeval farmhouse.
<u>CHURCH OF ST MARY</u>	West Sussex	The parish church of St Mary is mainly a 12-13th century church, incorporating the remains of Saxon...
<u>THE STREET</u>	West Sussex	Former school, which had been converted into several dwellings by 1996.
<u>BINSTED</u>	West Sussex	Medieval pottery and tile kilns excavated at Binsted in 1963-66. The earliest pottery kiln was a Mu...
<u>CHURCH OF ST MARY MAGDALENE</u>	West Sussex	Small Norman church, nave and chancel in one, Norman wall paintings, restored 1867.
<u>MEADOW LODGE</u>	West Sussex	Meadow Lodge is an early 19th century house of two storeys with three bays. The house is of painted...
<u>MARSH FARMHOUSE</u>	West Sussex	Marsh Farmhouse is a 16th century building, with a 19th century wing to the southeast and a modern ...
<u>THE OLD RECTORY</u>	West Sussex	Former rectory, possibly 19th century.
<u>DURRINGTON</u>	West Sussex	Medieval pottery and tile kiln excavated in Durrington, Walberton.
<u>WALBERTON LANE</u>	West Sussex	A Lower Palaeolithic handaxe was found in a cleaning stream with gravelly bottom in a garden
<u>WEST STUBBS COPSE</u>	West Sussex	A Lower Palaeolithic handaxe was found by Dr G Kellaway at West Stubbs Copse
<u>WEST STUBBS COPSE PIT</u>	West Sussex	A Lower Palaeolithic handaxe was found at West Stubbs Copse Pit also known as Slindon Quarry
<u>WEST STUBBS COPSE PIT</u>	West Sussex	A Lower Palaeolithic handaxe was found by A Woodcock in West Stubbs Copse Pit also known as Slindon Quarry
<u>WEST WALBERTON LANE</u>	West Sussex	A Lower Palaeolithic handaxes was found by Mr R H C Upton in a garden from a stream

6.23 Furthermore, non-designated archaeological sites known to the community and valued for their heritage interest are as follows:

- Medieval Tile Kilns at Hedgers Hill;
- A 'Moot Mound' (Anglo Saxon), also known at Hedgers Hill;
- Iron Age Earthworks at Barns Copse;
- Roman Villa east of Yapton Lane opposite Blacksmith's Corner;
- The route to the east and west Roman Road alongside the A27 (identified through the 2014 Lidar study);
- Iron Age ditches at Lower Farm, Binsted; and
- A cache of Roman Pottery close to the Dandara development at Fontwell.

Summary of Future Baseline

6.24 New development areas in the Neighbourhood Plan area have the potential to impact on the fabric and setting of heritage assets; for example, through inappropriate design and layout. It should be noted, however, that existing historic environment designations offer a degree of protection to heritage assets and their settings.

6.25 Alongside, new development need not be harmful to the significance of a heritage asset, and in the context of the Neighbourhood Plan area there may be opportunity for new development to enhance the historic setting of the village and better reveal assets' heritage significance.

Key Sustainability Issues

- The Neighbourhood Plan area contains 38 Grade II and one Grade I nationally designated listed buildings which are protected through the Listed Buildings and Conservation Areas Act 1990. It is currently not possible to determine whether the Grade II listed buildings are 'at risk'.
- There are two scheduled monuments within, or partially within the Neighbourhood Plan area, namely: 'Goblestubbs Copse Earthworks' and 'Madehurst Wood Earthworks'.
- The Neighbourhood Plan area contains two designated conservation area: 'Walberton Village' and 'Walberton Green', which contain several features and special qualities which contribute to local distinctiveness.
- A conservation area appraisal has not been prepared for 'Walberton Village and Walberton Green' specifically, and therefore it is not currently possible to gain an in-depth understanding of the special interest of the area.
- The HER for West Sussex contains records of 30 locally important heritage features located wholly or partly within the Neighbourhood Plan area.
- The parish has several locally distinctive flint walls (particularly within the built-up area boundaries) which contribute to the sense of place.
- There are seven additional non-designated archaeological sites known to the community and valued for their heritage interest.

What are the SEA objectives and appraisal questions for the Historic Environment SEA theme?

SEA objective	Assessment Questions
Protect, conserve and enhance heritage assets within the Neighbourhood Plan area	<p>Will the option/proposal help to:</p> <ul style="list-style-type: none"> • Conserve and enhance the significance of buildings and structures of architectural or historic interest, both designated and non-designated, and their setting? • Conserve and enhance the special interest, character and appearance of locally important features and their settings? • Support the integrity and the historic setting of sites of archaeological or historic interest recorded on the West Sussex HER? • Support access to, interpretation and understanding of the historic evolution and character of the environment? • Conserve and enhance archaeological remains, including historic landscapes? • Provide a positive strategy for the conservation and enhancement of the area's historic environment by guiding development proposals to address issues identified as threats to the character or appearance of the Walberton and Walberton Green Conservation Area? • Guide development proposals to secure remediation of issues identified as affecting the conservation area and prevent cumulative impacts?

7. Land, Soil and Water Resources

Focus of Theme

- Quality of agricultural land
- Water resources and water quality
- Mineral safeguarding areas

Policy Context

- 7.1 The EU's Soil Thematic Strategy⁶¹ presents a strategy for protecting soil resources in Europe. The main aim of the strategy is to minimise soil degradation and limit associated detrimental effects linked to water quality and quantity, human health, climate change, biodiversity, and food safety.
- 7.2 Adopted in October 2000, the purpose of the EU Water Framework Directive (WFD) is to establish a framework for the protection of inland surface waters, transitional waters, coastal waters and groundwater, driving a catchment-based approach to water management. In England and Wales there are 100 water catchments and it is Defra's intention is to establish a 'framework for integrated catchment management' across England. The Environment Agency is establishing 'Significant Water Management Issues' and recently presented second River Basin Management Plans to ministers. The plans seek to deliver the objectives of the WFD namely:
- Enhance the status and prevent the further deterioration of aquatic ecosystems and associated wetlands which depend on aquatic ecosystems;
 - Promote the sustainable use of water;
 - Reduce the pollution of water, especially by 'priority' and 'priority hazardous' substances;
 - Ensure the progressive reduction of groundwater pollution; and
 - Contribute to achieving 'good' water quality status for as many waterbodies as possible by 2027.
- 7.3 Key messages from the NPPF include:
- *'Planning policies and decisions should contribute to and enhance the natural and local environment by:*
 - protecting and enhancing valued landscapes, sites of biodiversity or geological value and soils; and*
 - recognising the intrinsic character and beauty of the countryside, and the wider benefits from natural capital and ecosystem services – including the economic and other benefits of the best and most versatile agricultural land, and of trees and woodland.'*
 - Prevent new or existing development from being 'adversely affected' by the presence of 'unacceptable levels' of soil pollution or land instability and be willing to remediate and mitigate 'despoiled, degraded, derelict, contaminated and unstable land, where appropriate'.
 - *'Planning policies and decisions should promote an effective use of land in meeting the need for homes and other uses, while safeguarding and improving the environment and ensuring safe and healthy living conditions. Strategic policies should set out a clear strategy for accommodating objectively assessed needs, in a way that makes as much use as possible of previously-developed or 'brownfield' land.'*

⁶¹ European Commission (2006) Soil Thematic Policy [online] available at: <http://ec.europa.eu/environment/soil/index_en.htm> last accessed [29/06/18]

- *'Encourage multiple benefits from both urban and rural land, including through mixed use schemes and taking opportunities to achieve net environmental gains.'*
 - Planning policies and decisions should *'give substantial weight to the value of using suitable brownfield land within settlements for homes and other identified needs'*, and *'promote and support the development of under-utilised land and buildings.'*
 - Taking a proactive approach to mitigating and adapting to climate change, taking into account the long-term implications for water supply.
 - Prevent new and existing development from contributing to, being put at unacceptable risk from, or being adversely affected by unacceptable levels of water pollution.
 - The government has produced a separate plan that specifically deals with planning policy in relation to waste management; this should be read in conjunction with the NPPF.
- 7.4 Along with the policies contained within Chapter 1 'Using and managing land sustainably' and Chapter 4 'Increasing resource efficiency, and reducing pollution and waste', Goal 2 'Clean and plentiful water', Goal 5 'Using resources from nature more sustainably and efficiently' and Goal 8 'Minimising waste' of the Government's 'A Green Future: Our 25 Year Plan to Improve the Environment' directly relates to the Land, Soil and Water Resources SEA theme.
- 7.5 Other key documents at the national level include Safeguarding our Soils: A Strategy for England⁶², which sets out a vision for soil use in England, and the Water White Paper⁶³, which sets out the Government's vision for a more resilient water sector. It states the measures that will be taken to tackle issues such as poorly performing ecosystems, and the combined impacts of climate change and population growth on stressed water resources. In terms of waste management, the Government Review of Waste Policy in England⁶⁴ recognises that environmental benefits and economic growth can be the result of a more sustainable approach to the use of materials.
- 7.6 In terms of waste management, the Government Review of Waste Policy in England⁶⁵ recognises that environmental benefits and economic growth can be the result of a more sustainable approach to the use of materials.
- 7.7 The National Waste Management Plan⁶⁶ provides an analysis of the current waste management situation in England and evaluates how it will support the implementation of the objectives and provisions of the revised Waste Framework Directive⁶⁷. This includes an assessment of the need for new collection schemes, additional waste infrastructure and investment channels, as well as providing general or strategic waste management policies.
- 7.8 At the local level, policies within the 'Soils, Horticultural and Equine Development' section, 'Water' section, 'Natural Resources & Minerals Safeguarding' section and 'Waste Management' section of the Adopted Arun Local Plan 2018 directly relate to the Land, Soil and Water Resources SEA theme.

⁶² Defra (2009) Safeguarding our Soils: A strategy for England [online] available to download from:

<<https://www.gov.uk/government/publications/safeguarding-our-soils-a-strategy-for-england>> last accessed [20/09/18]

⁶³ Defra (2011) Water for life (The Water White Paper) [online] available at <<http://www.official-documents.gov.uk/document/cm82/8230/8230.pdf>> last accessed [20/09/18]

⁶⁴ Defra (2011) Government Review of Waste Policy in England [online] available at:

<<http://www.defra.gov.uk/publications/files/pb13540-waste-policy-review110614.pdf>> last accessed [20/09/18]

⁶⁵ DEFRA (2011) Government Review of Waste Policy in England [online] available at:

https://assets.publishing.service.gov.uk/government/uploads/system/uploads/attachment_data/file/69401/pb13540-waste-policy-review110614.pdf [accessed 01/03/19]

⁶⁶ DEFRA (2013) Waste Management Plan for England [online] available at:

https://assets.publishing.service.gov.uk/government/uploads/system/uploads/attachment_data/file/265810/pb14100-waste-management-plan-20131213.pdf [accessed 01/03/19]

⁶⁷ Directive 2008/98/EC

Baseline Summary

Summary of Current Baseline

Soil Resources

- 7.9 The geology and soils of the area are determined by its location between the sea and chalk hills. The Bracklesham Group, London Clay, and Reading Formation (each consisting of clay, silt, sand and gravel in varying proportions) in the form of 'head' and 'raised beaches' are the main elements from which the soil derives. Fontwell sits on top of the Aldingbourne raised beach formed 400,000 years ago. In northern parts of the Parish, chalk is nearer the surface and the landscape therefore changes.
- 7.10 The Agricultural Land Classification (ALC) classifies land into six grades (plus 'non-agricultural land' and 'urban'), where Grades 1 to 3a are recognised as being the 'best and most versatile' land and Grades 3b to 5 of poorer quality. In this context, there is a need to avoid loss of higher quality 'best and most versatile' agricultural land.
- 7.11 In terms of the location of the best and most versatile (BMV) agricultural land, a detailed classification has only been undertaken on a small area of land within the parish, including:⁶⁸
- Fragmented parcels of land north and north-west of Walberton village are classified as Grade 3b (Moderate);
 - There are small areas of agricultural land classified as Grade 1 (Excellent) in the south-west of the parish;
 - Scattered areas in the west of the parish are classified as Grade 3a (Good);
 - A small area east of Walberton village is classified as Grade 4 (Poor); and
 - An area south of Walberton village is classified as Grade 2 (Very Good).
- 7.12 The Provisional Agricultural Land Quality dataset⁶⁹ also identifies areas of Grade 1, Grade 2, and Grade 3 agricultural land. There is a small section classed as 'Other' land (Other land primarily in non-agricultural use) in the central section of the Neighbourhood Plan area.
- 7.13 It is also important to note that the national dataset is of very low resolution and may not necessarily provide an accurate reflection of the agricultural land quality across the whole of the Neighbourhood Plan area. However, based on the results of the 'Predictive BMV Land Assessment'⁷⁰, greater than 60% of the undeveloped areas within Walberton have a high likelihood of containing BMV land.

Water Resources

- 7.14 Three streams run through Binsted carrying surface water from The Downs towards the sea via a tributary of the River Arun⁷¹, including the 'Lidsey Rife' and 'Barnham Rife'. The 'Aldingbourne Rife' is located south and south west outside the boundary for the Walberton Neighbourhood Plan area.
- 7.15 The Nitrates Directive (91/676/EEC) requires Member States to identify areas where groundwater have nitrate concentrations of more than 50 mg/l nitrate or are thought to be at risk

⁶⁸ Magic Maps, Agricultural Land Classification (no date): [online] Available to access via <<https://magic.defra.gov.uk/MagicMap.aspx>> last accessed [10.12.19]

⁶⁹ Natural England (2018) Agricultural Land Classification map London and the South East (ALC007) [online] available at: <<http://publications.naturalengland.org.uk/publication/141047?category=5954148537204736>> last accessed [22/08/19]

⁷⁰ Natural England (2017): 'Likelihood of Best and Most Versatile (BMV) Agricultural Land – Strategic scale map London and the South East', [online] available to access via: <<http://publications.naturalengland.org.uk/publication/6056482614804480?category=5208993007403008>> last accessed [19/08/19]

⁷¹ Walberton Neighbourhood Development Plan (2017): [online] available to access via: <https://www.southdowns.gov.uk/wp-content/uploads/2017/03/Walberton_Made-NDP.pdf> last accessed [28/11/19]

of nitrate contamination. Areas associated with such groundwater are designated as Nitrate Vulnerable Zones (NVZs) within which, Member States are required to establish Action Programmes to reduce and prevent further nitrate contamination. In this regard, the Neighbourhood Plan overlaps the 'Aldingbourne Rife' Surface Water NVZ, and the 'Sussex Chalk' Ground Water NVZ. However, it is useful to note that as the Neighbourhood Plan is likely to allocate land for residential development and potential employment areas, such uses are not considered to increase the risk of pollution to the NVZ.

Water Quality

- 7.16 Walberton is located within the South East River Basin District, primarily overlapping with the 'Western Streams' Operational Catchment. There are eight water bodies within the 'Western Streams' Operational Catchment.
- 7.17 Based on the most recently completed water quality assessments undertaken in 2016, the Environment Agency's Catchment Data Explorer⁷² classifies the Lidsey Rife⁷³ as having a 'moderate' ecological status and a 'good' chemical status, with an overall classification as 'moderate'. The reasons for not achieving good status (RNAGs) are primarily attributed to the following activities: agriculture and rural land management, domestic general public, and the water industry.

Mineral Resources

- 7.18 Mineral resources are defined as natural concentrations of minerals or, in the case of aggregates, bodies of rock that are, or may become, of potential economic interest due to their inherent properties. They make an essential contribution to the country's prosperity and quality of life. Since minerals are a non-renewable resource, minerals safeguarding is the process of ensuring that non-minerals development does not needlessly prevent the future extraction of mineral resources, of local and national importance⁷⁴.
- 7.19 Adopted in July 2018, the Joint Minerals Local Plan⁷⁵ covers the period to 2033 and provides the basis for making consistent decisions about planning applications for mineral activities throughout the county. Appendix E of the plan confirms the location of the five mineral safeguarding areas (MSAs) throughout West Sussex, which includes: Sharp Sand and Gravel, Soft Sand (including potential Silica Sand), Brick Clay Resource, Chalk, and Building Stone. In this context, the Neighbourhood Plan area likely overlaps with the Sharp Sand and Gravel MSA and the Chalk MSA. However, it is difficult to be certain due to the scale of the map presented within Appendix E.

Summary of Future Baseline

- 7.20 Future development has the potential to affect water quality through diffuse pollution, waste water discharges, water run-off, and modification. However, water companies are likely to maintain adequate water supply and wastewater management over the plan period, and the requirements of the Water Framework Directive are likely to lead to continued improvements to water quality within the Neighbourhood Plan area and wider area.
- 7.21 Due to the prevalence of BMV agricultural land within sections of the undeveloped areas surrounding Walberton, new developments which are located outside of the existing villages will likely lead to losses of higher quality (best and most versatile) agricultural land.

⁷² Environment Agency (2019): 'Catchment Data Explorer', [online] available to access via: <<https://environment.data.gov.uk/catchment-planning/>> [accessed 22/08/19]

⁷³ Environment Agency (2019): 'Catchment Data Explorer – Lidsey Rife Overview', [online] available to access via: <https://environment.data.gov.uk/catchment-planning/WaterBody/GB107041012010> last accessed [13/12/19]

⁷⁴ GOV.UK (2014): 'Minerals Guidance', [online] available to access via: <<https://www.gov.uk/guidance/minerals>> last accessed [04/09/19]

⁷⁵ West Sussex County Council (2018): 'Joint Minerals Local Plan', [online] available to access via: <<https://www.westsussex.gov.uk/about-the-council/policies-and-reports/environment-planning-and-waste-policy-and-reports/minerals-and-waste-policy/joint-minerals-local-plan/>> last accessed [22/08/19]

Key Sustainability Issues

- The Provisional Agricultural Land Quality dataset identifies areas of Grade 1, Grade 2, and some Grade 3 agricultural land within the Neighbourhood Plan area.
- Based on the results of the 'Predictive BMV Land Assessment', greater than 60% of the undeveloped areas in the parish have a high likelihood of containing BMV land.
- The Neighbourhood Plan area is within the 'Aldingbourne Rife' Surface Water NVZ, and the 'Sussex Chalk' Ground Water NVZ.
- Based on the most recently completed water quality assessments undertaken in 2016, the Lidsey Rife as having a 'moderate' ecological status and a 'good' chemical status, with an overall classification as 'moderate'. The RNAGs are primarily attributed to agriculture and rural land management, domestic general public, and the water industry.
- The Neighbourhood Plan area potentially overlaps with the Sharp Sand and Gravel MSA and the Chalk MSA. However, it is difficult to be certain due to the scale of the map presented within the Joint Minerals Local Plan.

What are the SEA objectives and appraisal questions for the Land, Soil and Water Resources SEA theme?

SEA objective

Assessment Questions

Ensure the efficient and effective use of land.

Will the option/proposal help to:

- Promote the use of previously developed land?
- Avoid the development of the best and most versatile agricultural land, which in the parish may comprise Grade 1 to 3a agricultural land?
- Protect the integrity of mineral safeguarding areas?

Promote sustainable waste management solutions that encourage the reduction, re-use and recycling of waste.

Will the option/proposal help to:

- Reduce the amount of waste produced?
- Support the minimisation, reuse and recycling of waste?
- Maximise opportunities for local management of waste in order to minimise export of waste to areas outside?
- Encourage recycling of materials and minimise consumption of resources during construction?

Use and manage water resources in a sustainable manner.

Will the option/proposal help to:

- Support improvements to water quality?
- Minimise water consumption?
- Protect surface water resources?

8. Population and Community

Focus of Theme

- Population size
- Population density
- Age structure
- Deprivation
- Housing mix and affordability
- Education and skills

Policy Context

8.1 Key messages from the NPPF include:

- One of the three overarching objectives of the NPPF is a social objective to; *'support strong, vibrant and healthy communities, by ensuring that a sufficient number and range of homes can be provided to meet the needs of present and future generations; and by fostering a well-designed and safe built environment, with accessible services and open spaces that reflect current and future needs and support communities' health, social and cultural wellbeing.'*
- To support the Government's objective of significantly boosting the supply of housing, strategic policies *'should be informed by a local housing need assessment, conducted using the standard method in national planning guidance. In addition to the local housing need figure, any needs that cannot be met within neighbouring areas should also be taken into account in establishing the amount of housing to be planned for.'*
- The size, type and tenure of housing needed for different groups in the community should be assessed and reflected in planning policies. Where a need for affordable housing is identified, planning policies should specify the type of affordable housing required, and expect it to be met on-site where possible.
- Recognise the important contribution of small and medium sized development sites in meeting housing needs. Local Plans should identify land to accommodate at least 10% of their housing requirement on sites no larger than one hectare, and neighbourhood planning groups should also consider the opportunities for allocating small and medium-sized sites.
- In rural areas, planning policies and decisions should be responsive to local circumstances and plan housing development to reflect local needs, particularly for affordable housing, including through rural exception sites where appropriate. Authorities should consider whether allowing some market housing would facilitate the provision of affordable housing to meet local needs.
- Promote the retention and development of local services and community facilities such as local shops, meeting places, sports venues, open space, cultural buildings, public houses and places of worship.
- Ensure that developments create safe and accessible environments where crime and disorder, and the fear of crime, do not undermine quality of life or community cohesion. Places should contain clear and legible pedestrian routes, and high-quality public spaces, which encourage the active and continual use of public areas.
- Ensuring that there is a *'sufficient choice of school places'* and taking a *'proactive, positive and collaborative approach'* to bringing forward *'development that will widen choice in education'*.

- 8.2 The 'Ready for Ageing?' report, published by the Select Committee on Public Service and Demographic Change⁷⁶ warns that society is underprepared for an ageing population. The report states that *'longer lives can be a great benefit, but there has been a collective failure to address the implications and without urgent action this great boon could turn into a series of miserable crises'*. The report recognises that the supply of specialist housing for the older generation is insufficient for the demand. There is a need for central and local Government, housing associations, and house builders to ensure that these housing needs are better addressed, giving as much priority to promoting an adequate market of social housing for the older generation as is given to the younger generation.
- 8.3 At the local level, policies within the 'Sustainable Place' chapter, 'Living Place' chapter and the 'Prosperous Place' chapter of the Adopted Arun Local Plan 2018 directly relate to the Population and Community SEA theme.

Baseline Summary

Summary of Current Baseline

Population

Table 8.1: Population growth 2001-2011⁷⁷

Date	Walberton	Arun	South East	England
2001	1,941	140,759	8,000,645	49,138,831
2011	2,174	149,518	8,634,750	53,012,456
Population Change 2001-2011	+12.0%	+6.2%	+7.9%	+7.9%

- 8.4 As shown in **Table 8.1**, the population of Walberton increased at a higher rate between 2001 and 2011 than Arun, the South East of England and England averages. Approximately 1.5% of the population of Arun live within the Neighbourhood Plan area. The population is largely contained within the three villages of Walberton, Binsted and Fontwell.

Age Structure

Table 8.2: Age Structure (2011)⁷⁸

	Walberton	Arun	South East	England
0-15	17.9%	15.6%	19.0%	18.9%
16-24	7.3%	9.2%	11.2%	11.9%
25-44	19.4%	21.9%	26.5%	27.5%
45-59	22.8%	19.4%	19.9%	19.4%
60+	32.6%	33.9%	23.4%	22.3%
Total Population	2174	149,518	8,634,750	53,012,456

⁷⁶ Select Committee on Public Service and Demographic Change (2013) Ready for Ageing? [online] available at: <http://www.parliament.uk/business/committees/committees-a-z/lords-select/public-services-committee/report-ready-for-ageing/> last accessed [21/09/18]

⁷⁷ ONS (no date): Census 2011: Population Density 2011 (Table QS102EW); Population Density 2001 (Table UV02)

⁷⁸ ONS (no date): Census 2011: Age Structure 2011 (Table KS102EW)

- 8.5 Generally, there is a higher proportion of residents within the 60+ age category within the Neighbourhood Plan area (32.6%) in comparison to the total for the South East of England (23.4%) and England (22.3%), as shown in **Table 8.2**. However, this total is lower than the percentage for Arun (33.9%).
- 8.6 In contrast, a lower proportion of residents are within the working age categories (25-44 and 45-59) in the Neighbourhood Plan area (42.1%) in comparison to the totals for the South East of England (46.4%) and England (46.9%). However, this total is higher than the percentage for Arun (41.3%).
- 8.7 Additionally, 25.25% of residents within the Neighbourhood Plan area are within the younger age categories (0-15 and 16-24), higher than the total for Arun (24.8%) but less than the totals for the South East of England (30.2%) and England (30.8%).

Household Deprivation

- 8.8 Census statistics measure deprivation across four 'dimensions' of deprivation, summarized below:
- **Employment:** Any person in the household (not a full-time student) that is either unemployed or long-term sick.
 - **Education:** No person in the household has at least a level 2 qualification and no person aged 16-18 is a full-time student.
 - **Health and Disability:** Any person in the household that has generally 'bad' or 'very bad' health or has a long-term health problem.
 - **Housing:** The household accommodation is either overcrowded (with an occupancy rating of -1 or less), in a shared dwelling or has no central heating.

Table 8.3: Relative household deprivation dimensions⁷⁹

	Walberton	Arun	South East	England
Household not deprived	53.6%	40.4%	47.7%	42.5%
Deprived in 1 dimension	30.8%	35.6%	32.2%	32.7%
Deprived in 2 dimensions	13.8%	19.6%	16.0%	19.1%
Deprived in 3 dimensions	1.8%	3.8%	3.7%	5.1%
Deprived in 4 dimensions	0.0%	0.5%	0.4%	0.5%

- 8.9 Based on the information presented in **Table 8.3**, fewer households are deprived in one or more dimensions within the Neighbourhood Plan area (30.8%) in comparison to the regional and national trends. Out of the 46.4% of households which are deprived in the Neighbourhood Plan area, the majority are deprived in one or two dimensions, which is similar to the regional and national averages.

Index of Multiple Deprivation

- 8.10 The Index of Multiple Deprivation 2015 (IMD) is an overall relative measure of deprivation constructed by combining seven domains of deprivation according to their respective weights, as described below. The seven deprivation domains are as follows:

⁷⁹ ONS (no date): Census 2011: 'Households by Deprivation Dimensions 2011 (Table QS119EW)

- **Income:** The proportion of the population experiencing deprivation relating to low income, including those individuals that are out-of-work and those that are in work but who have low earnings (satisfying the respective means tests).
 - **Employment:** The proportion of the working-age population in an area involuntarily excluded from the labour market, including those individuals who would like to work but are unable to do so due to unemployment, sickness or disability, or caring responsibilities.
 - **Education, Skills and Training:** The lack of attainment and skills in the local population.
 - **Health Deprivation and Disability:** The risk of premature death and the impairment of quality of life through poor physical or mental health. Morbidity, disability and premature mortality are also considered, excluding the aspects of behaviour or environment that may be predictive of future health deprivation.
 - **Crime:** The risk of personal and material victimisation at local level.
 - **Barriers to Housing and Services:** The physical and financial accessibility of housing and local services, with indicators categorised in two sub-domains.
 - a. 'Geographical Barriers': relating to the physical proximity of local services
 - b. 'Wider Barriers': relating to access to housing, such as affordability.
 - **Living Environment:** The quality of the local environment, with indicators falling categorised in two sub-domains.
 - c. 'Indoors Living Environment' measures the quality of housing.
 - d. 'Outdoors Living Environment' measures air quality and road traffic accidents.
 - Two supplementary indices (subsets of the Income deprivation domains), are also included:
 1. Income Deprivation Affecting Children Index: The proportion of all children aged 0 to 15 living in income deprived families.
 2. Income Deprivation Affecting Older People Index: The proportion of all those aged 60 or over who experience income deprivation.
- 8.11 Lower Super Output Areas (LSOAs)⁸⁰ are a geographic hierarchy designed to improve the reporting of small area statistics in England and Wales. They are standardized geographies designed to be as consistent in population as possible, with each LSOA containing approximately 1,000 to 1,500 people. In relation to the IMD 2015, LSOAs are ranked out of the 32,844 in England and Wales, with 1 being the most deprived. Ranks are normalized into deciles, with a value of 1 reflecting the top 10% most deprived LSOAs in England and Wales.
- 8.12 There are two LSOAs which are either wholly or partly located within the Neighbourhood Plan area, namely: Arun 003F and Arun 001D. Both LSOAs are amongst the top 50% least deprived LSOAs in England based on the 'Overall IMD' domain, and Arun 003F is amongst the 30% least deprived neighbourhoods in the country.

Housing Tenure

- 8.13 Within the Neighbourhood Plan area, 84.0% of residents either own their home outright or with a mortgage, higher than the totals for Arun (73.8%), the South East of England (67.6%) and England (63.3%).
- 8.14 As shown in **Figure 8.1** (overleaf), a lower proportion of residents live within social rented and privately rented housing in the Neighbourhood Plan area in comparison to the regional and national trends.

⁸⁰ DCLG (2015): Indices of Deprivation Explorer', [online] available to access via: <http://dclgapps.communities.gov.uk/imd/idmap.html> last accessed [17/09/19]

8.15 1.6% of residents in the Neighbourhood Plan area live in rent-free accommodation or shared ownership accommodation, which is slightly higher than the totals for Arun (1.2%), the South East of England (1.3%) and England (1.3%).

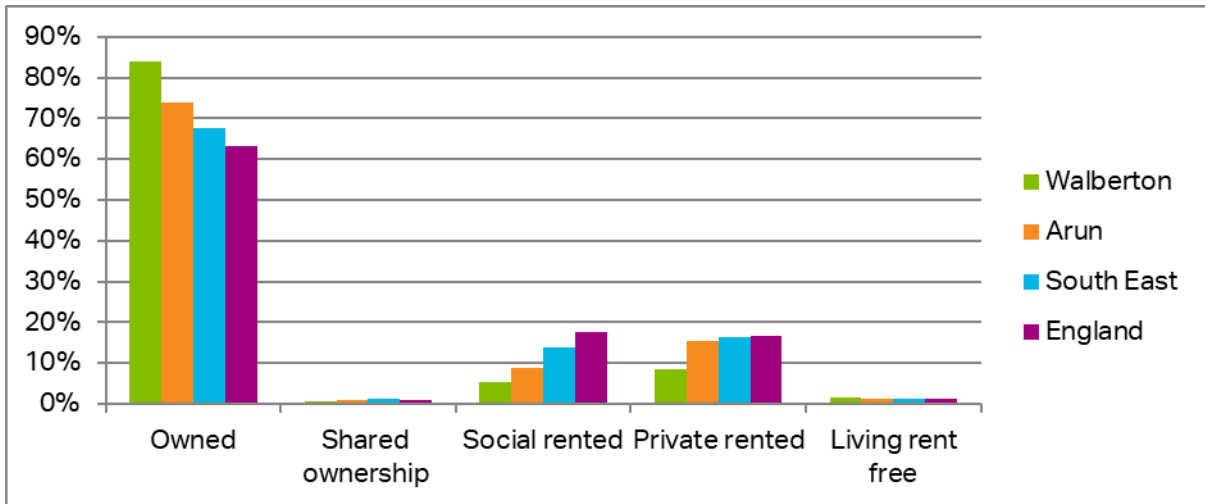


Figure 8.1: 'Tenure by Household' ⁸¹

8.16 Within the Neighbourhood Plan area, 84.0% of residents either own their home outright or with a mortgage, higher than the totals for Arun (73.8%), the South East of England (67.6%) and England (63.3%).

8.17 As shown in **Figure 8.1**, a lower proportion of residents live within social rented and privately rented housing in the Neighbourhood Plan area in comparison to the regional and national trends.

8.18 1.6% of residents in the Neighbourhood Plan area live in rent-free accommodation or shared ownership accommodation, which is slightly higher than the totals for Arun (1.2%), the South East of England (1.3%) and England (1.3%).

Education

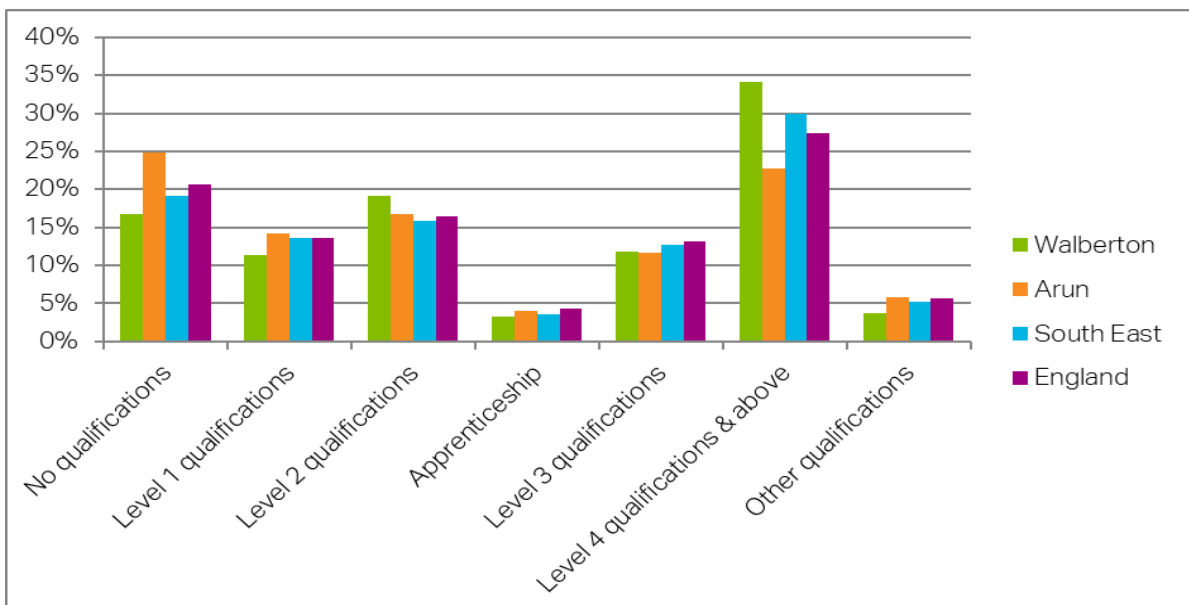


Figure 8.2: 'Highest level of Qualification' ⁸²

⁸¹ ONS (no date): Census 2011: Tenure-Households 2011 (Table QS405EW)

⁸² ONS (no date): Census 2011: Highest Level of Qualification 2011 (Table QS501EW)

8.19 Based on the 2011 census data presented in **Figure 8.2** (above), 16.7% of residents in the Neighbourhood Plan area have no qualifications, lower than the total for Arun (24.8%), the South East of England (19.1%) and England (20.7%).

8.20 Comparatively, 34.1% of residents within the Neighbourhood Plan area have a Level 4 qualification or above, which is higher than the total for Arun (22.8%), the South East of England (29.9%) and the total for England (27.4%).

Employment

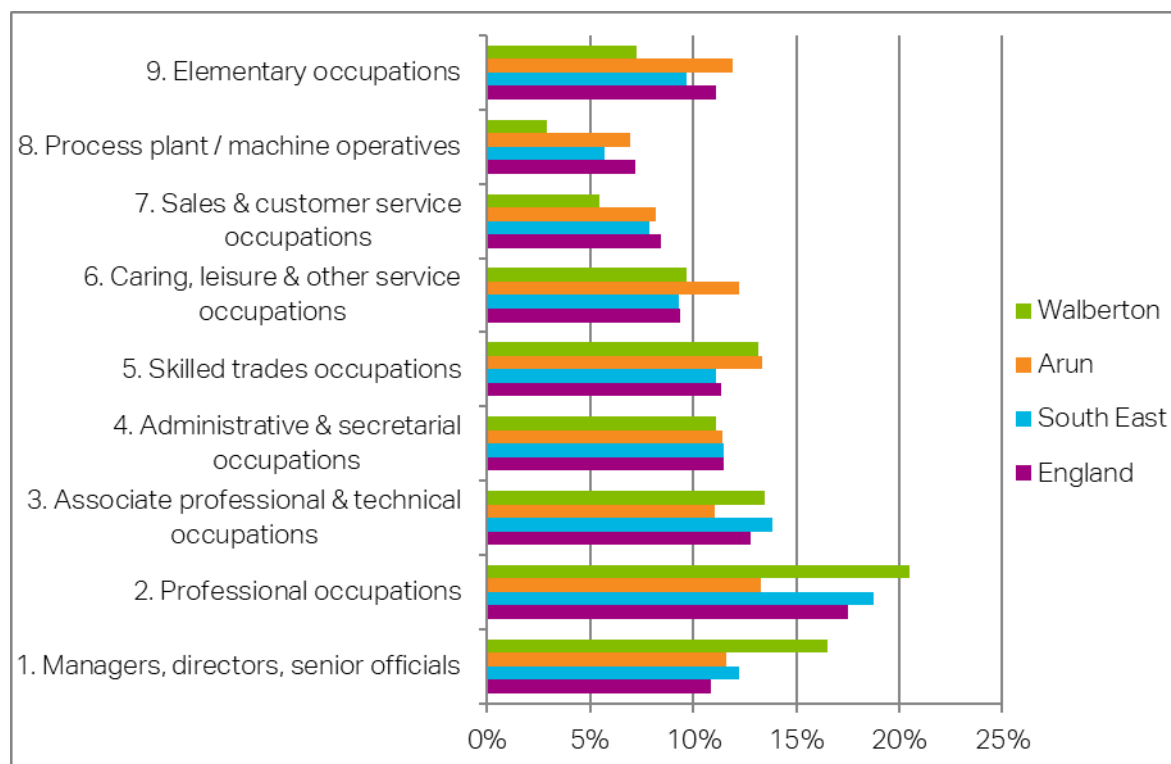


Figure 8.3: 'Occupation of usual residents aged 16 to 74 in employment'⁸³

8.21 Regarding employment within the Neighbourhood Plan area, the following three occupation categories support the most residents:

- Professional occupations (20.5%);
- Managers, directors and senior officials (16.5%); and
- Associate professional and technical occupations (13.5%)

8.22 Overall, 50.5% of residents within the Neighbourhood Plan area are employed in one of the above three occupation categories, greater than the totals for Arun (35.9%) and England (41.1%) but similar to the total for the South East of England (44.8%). This is highlighted in **Figure 8.3**.

Community Assets

8.23 The Neighbourhood Plan area has a range of local community facilities which serve the needs of the local community and play a vital role in supporting the Parish's sense of identity. Within Walberton, such assets include: St Mary's Church, a primary school, pre-schools and child care facility, local stores / post office, business parks, a dentist's surgery and an art gallery.

8.24 Additionally, there are open areas of significance within the neighbourhood Plan area which are demonstrably special to a local community, for example: because of their beauty, historic significance, recreational value and/or biodiversity value. Specifically, the draft version of the

⁸³ ONS (no date): Census 2011: 'Occupation 2011' (Table KS608EW)

Neighbourhood Plan highlights that there are several local green spaces and local open spaces within the parish. This includes:

- Walberton Village Green and Pond;
- Homefield Crescent Green Space;
- Hunters Mews Play Areas, Fontwell;
- Pigeon House Fields adjoining St Mary's Church, Walberton;
- The Allotments, Yapton Lane;
- Fontwell Meadows Open Space; and
- Tupper's Field, to be known as 'Avisford Grange'.

Summary of Future Baseline

8.25 As the population of the Neighbourhood Plan area continues to age, this could potentially negatively impact upon the future vitality of the local community and economy of certain parts of the Neighbourhood Plan area, whilst also placing additional pressures to existing services and facilities.

8.26 The suitability (e.g. size and design) and affordability of housing for local requirements depends on the implementation of appropriate housing policies through the Local Plan and Neighbourhood Plan. Unplanned development may have wider implications in terms of transport and access to infrastructure, or the natural environment.

Key Sustainability Issues

- The population of Walberton increased at a higher rate between 2001 and 2011 in comparison to Arun, the South East of England and England averages.
- Generally, there is a higher proportion of residents within the 60+ age category within the Neighbourhood Plan area (32.6%) in comparison to the regional and national trends.
- There are two LSOAs which are either wholly or partly located within the Neighbourhood Plan area, namely: Arun 003F and Arun 001D. Both LSOAs are amongst the top 50% least deprived LSOAs in England based on the 'Overall IMD' domain.
- Walberton has a range of local community facilities which serve the needs of the local community and play a vital role in supporting the parish's sense of identity.
- There are several local green spaces and local open spaces within the parish.

What are the SEA objectives and appraisal questions for the Population and Community SEA theme?

SEA objective	Assessment Questions
Cater for existing and future residents' needs as well as the needs of different groups in the community, and improve access to local, high-quality community services and facilities.	<p>Will the option/proposal help to:</p> <ul style="list-style-type: none"> • Encourage and promote social cohesion and encourage active involvement of local people in community activities? • Minimise fuel poverty? • Maintain or enhance the quality of life of existing local residents? • Improve the availability and accessibility of key local facilities, including specialist services for disabled and older people?
Reduce deprivation and promote a more inclusive and self-contained community.	<ul style="list-style-type: none"> • Support the provision of land for allotments and cemeteries?
Provide everyone with the opportunity to live in good quality, affordable housing, and ensure an appropriate mix of dwelling sizes, types and tenures.	<p>Will the option/proposal help to:</p> <ul style="list-style-type: none"> • Support the provision of a range of house types and sizes? • Support enhancements to the current housing stock? • Meet the needs of all sectors of the community? • Provide quality and flexible homes that meet people's needs? • Promote the use of sustainable building techniques, including use of sustainable building materials in construction? • Provide housing in sustainable locations that allow easy access to a range of local services and facilities?

9. Health and Wellbeing

Focus of Theme

- Health indicators and deprivation
- Influences on health and wellbeing

Policy Context

9.1 Key messages from the NPPF include:

- One of the three overarching objectives of the NPPF is a social objective to; *'support strong, vibrant and healthy communities, by ensuring that a sufficient number and range of homes can be provided to meet the needs of present and future generations; and by fostering a well-designed and safe built environment, with accessible services and open spaces that reflect current and future needs and support communities' health, social and cultural wellbeing.'*
- *'Planning policies and decisions should aim to achieve healthy, inclusive and safe places which enable and support healthy lifestyles, especially where this would address identified local health and wellbeing needs – for example through the provision of safe and accessible green infrastructure, sports facilities, local shops, access to healthier food, allotments and layouts that encourage walking and cycling.'*
- Policies and decisions should take into account and support the delivery of local strategies to improve health, social and cultural well-being for all sections of the community.
- Access to a network of high-quality open spaces and opportunities for sport and physical activity is important for the health and wellbeing of communities. Development should avoid building on existing open space, sports and recreational buildings and land, including playing fields.
- Promote the retention and development of local services and community facilities such as local shops, meeting places, sports venues, cultural buildings, public houses and places of worship.

9.2 In relation to other key national messages in relation to health, Fair Society, Healthy Lives⁸⁴ ('The Marmot Review') investigated health inequalities in England and the actions needed in order to tackle them. Subsequently, a supplementary report was prepared providing additional evidence relating to spatial planning and health on the basis that that there is: "overwhelming evidence that health and environmental inequalities are inexorably linked and that poor environments contribute significantly to poor health and health inequalities".

9.3 The increasing role that local level authorities are expected to play in providing health outcomes is demonstrated by recent government legislation. The Health and Social Care Act 2012 transferred responsibility for public health from the NHS to local government, giving local authorities a duty to improve the health of the people who live in their areas. This will require a more holistic approach to health across all local government functions.

9.4 At the local level, policies within the 'Health, Recreation & Leisure' section of the Adopted Arun Local Plan 2018 directly relate to the Health and Wellbeing SEA theme.

⁸⁴ The Marmot Review (2011) The Marmot Review: Implications for Spatial Planning [online] available to download from: <
<https://www.nice.org.uk/media/default/About/what-we-do/NICE-guidance/NICE-guidelines/Public-health-guidelines/Additional-publications/Spatial-planning/the-marmot-review-implications-for-spatial-planning.pdf>> last accessed [24/09/18]

Baseline Summary

Summary of Current Baseline

Joint Strategic Needs Assessment

9.5 At the regional level, the 2018 Joint Strategic Needs Assessment (JSNA) summary for West Sussex⁸⁵ provides a variety of statistics relating to the following themes: environment, population, assets and health/wellbeing, and provides a section on each broad life-stage of the population: childhood (starting well), working age (living well) and older age (ageing well). Summary of the key challenges as follows:

- Year-on-year changes in the 65 and over population, averaging +2,500 per year between 2002 and 2017, with a projected average of +4,800 per year between 2017 and 2032;
- In 2016/2017, 19.3% of adults were estimated to be physically inactive;
- 60% of adults and 29% of 10/11-year olds are overweight (including obese);
- Violent crime (as measured by the rate of recorded violent crime including sexual offences per 1,000 population) has been increasing in West Sussex, and nationally, in recent years. In 2016/17 there were a total of 13,567 recorded offences compared with 9,740 in 2014/15;
- The rate of people killed or seriously injured on the roads remains high in West Sussex. The rate for 2014-16 of 56.8 per 100,000 is significantly higher than England (39.7) and the 4th highest amongst comparable authorities; and
- It is estimated that 117,400 adults (aged 16+) in West Sussex are likely to have a common mental health problem, namely: generalised anxiety disorder, depression, phobias, obsessive compulsive disorder or a panic disorder.

9.6 Published for public consultation in December 2018 and reflecting the outcomes of the JSNA, the consultation draft of the Joint Health and Wellbeing Strategy 2019-2024 (JHWS) outlines a variety of aims which focus on the most important issues across the county, with an overall vision as follows⁸⁶:

"West Sussex is a good place in which to grow up, achieve, raise a family and grow old, in strong, safe and sustainable communities – it is a place where improved health and wellbeing is experienced by all our residents, and the health and wellbeing gap between communities is reducing."

Public Health Profile for Arun District

9.7 Published in July 2018 by Public Health England, the public health profile for Arun district outlines the following key trends⁸⁷:

- Life expectancy for both men and women is slightly higher than the England averages;
- Life expectancy is 9.5 years lower for men and 8.2 years lower for women in the most deprived areas of Arun than in the least deprived areas; and
- Estimated levels of adult physical activity (63.9%) are lower than the regional total (69.8%) and the national total (66.3%) based on 2017/18 data.

⁸⁵ West Sussex Health and Wellbeing Board (2018): 'JSNA Summary', [online] available to access via:

<<https://jsna.westsussex.gov.uk/updates/west-sussex-jsna-summary-2018/>> last accessed [04/12/19]

⁸⁶ West Sussex Health and Wellbeing Board (2018): 'Joint Health and Wellbeing Strategy 2019-24 (Consultation Draft)', [online] available to access via: <<https://haveyoursay.westsussex.gov.uk/public-health/jhw-strategy-consultation/>> last accessed [04/12/19]

⁸⁷ Public Health England (2018): 'Public Health Profile for Arun', [online] available to access via:

<<https://fingertips.phe.org.uk/profile/health-profiles>> last accessed [04/12/19]

Health indicators and deprivation

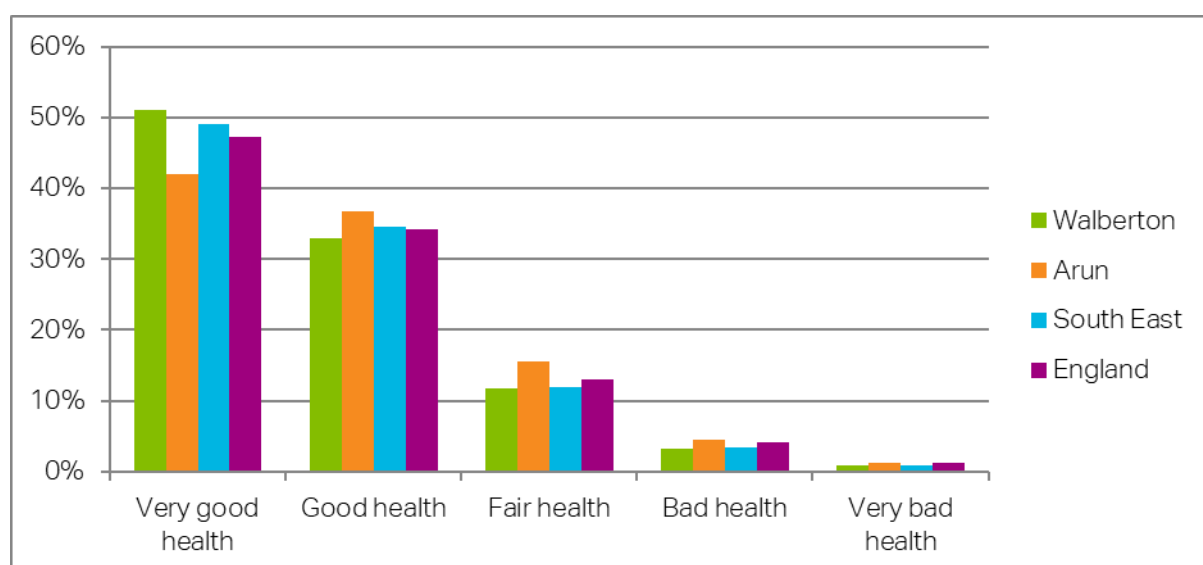


Figure 9.1: 'General Health'⁸⁸

9.8 Deprivation is a significant contributor to poor health and can have adverse effects on wellbeing, with elements related to poor housing quality, living environment, income and employment previously discussed in detail in Chapter 8.

9.9 As highlighted in **Figure 9.1** above, 84.0% of residents in the Neighbourhood Plan area consider themselves as having 'very good health' or 'good health', broadly aligning to the totals for the South East of England (83.6%) England (81.4%) but higher than the total for Arun (78.8%). Additionally, 4.2% of residents in the Neighbourhood Plan area consider themselves to have 'bad health' or 'very bad health', lower than the totals for Arun (5.7%) and England (5.4%), and similar to the total for the South West of England (4.3%).

9.10 The total percentage of residents within the Neighbourhood Plan area who report that their activities are limited either 'a little' or 'a lot' (18.3%) broadly aligns with the total for England (17.6%). Comparatively, the total for the Neighbourhood Plan area is higher than the total for the South East of England (15.7%) and lower than the total for Arun (21.1%).

Table 9.1: Disability⁸⁹

	Walberton	Arun	South East	England
Activities limited 'a lot'	6.9%	9.4%	6.9%	8.3%
Activities limited 'a little'	11.4%	11.7%	8.8%	9.3%
Activities 'not limited'	81.7%	78.9%	84.3%	82.4%

Summary of Future Baseline

9.11 Health and wellbeing levels within the Neighbourhood Plan area are generally good, with a high percentage of residents reporting 'good' or 'very good' health, and a low percentage of residents reporting that their activities are limited in some way.

9.12 However, an ageing population within the Neighbourhood Plan area may increase the reported cases of disability, reduce the levels of good health, and place future pressures on health

⁸⁸ ONS (no date): Census 2011: 'General Health 2011' (Table QS302EW)

⁸⁹ ONS (no date): Census 2011: 'Long-term Health Problem or Disability 2011' (Table QS303EW)

services in the wider area. Similarly, ongoing cuts to community services have the potential to lead to effects on health and wellbeing to key population groups (i.e. elderly population).

- 9.13 Obesity is also seen as an increasing issue by health professionals, and one that will contribute to significant health impacts on individuals, including increasing the risk of a range of diseases, including heart disease, diabetes and some forms of cancer.

Key Sustainability Issues

- The JSNA highlights that annual changes in the 65+ population averaged +2,500 per year between 2002 and 2017, projecting averages of +4,800 per year between 2017 and 2032.
- The 2018 Public Health Profile for Arun estimated that levels of adult physical activity across the district (63.9%) is lower than the regional total (69.8%) and the national total (66.3%).
- 18.3% of residents within the Neighbourhood Plan area report that their activities are limited either 'a little' or 'a lot'.
- 84.0% of residents in the Neighbourhood Plan area consider themselves as having 'very good health' or 'good health', broadly aligning to the totals for the South East of England (83.6%) England (81.4%) but higher than the total for Arun (78.8%).

What are the SEA objectives and appraisal questions for the Health and Wellbeing SEA theme?

SEA objective	Assessment Questions
Improve the health and wellbeing residents within the Neighbourhood Plan area.	<p>Will the option/proposal help to:</p> <ul style="list-style-type: none"> • Promote accessibility to a range of leisure, health and community facilities, for all age groups? • Address the key challenges identified in the JSNA? • Provide and enhance the provision of community access to green infrastructure, in accordance with Accessible Natural Greenspace Standards? • Promote the use of healthier modes of travel? • Improve access to the countryside for recreational use? • Avoiding any negative impacts to the quality and extent of existing recreational assets, such as formal or informal footpaths?

10. Transportation

Focus of Theme

- Transportation infrastructure
- Traffic flows and congestion
- Accessibility
- Car ownership
- Travel to work

Policy Context

10.1 European and UK transport policies and plans place emphasis on the modernisation and sustainability of the transport network. Specific objectives include reducing pollution and road congestion through improvements to public transport, walking and cycling networks and reducing the need to travel. National policy also focuses on the need for the transport network to support sustainable economic growth.

10.2 Key messages from the NPPF include:

- *'Transport issues should be considered from the earliest stages of plan-making and development proposals, so that:*
 - i. The potential impacts of development on transport networks can be addressed*
 - ii. Opportunities from existing or proposed transport infrastructure, and changing transport technology and usage, are realised*
 - iii. Opportunities to promote walking, cycling and public transport use are identified and pursued*
 - iv. The environmental impacts of traffic and transport infrastructure can be identified, assessed and taken into account*
 - v. Patterns of movement, streets, parking and other transport considerations are integral to the design of schemes, and contribute to making high quality places.'*
- *'Significant development should be focused on locations which are or can be made sustainable, through limiting the need to travel and offering a genuine choice of transport modes. This can help to reduce congestion and emissions, and improve air quality and public health. However, opportunities to maximise sustainable transport solutions will vary between urban and rural areas, and this should be taken into account in both plan-making and decision-making.'*

10.3 At the local level, each Local Transport Authority in England and Wales has a statutory duty to produce and adopt a Local Transport Plan through the Local Transport Act 2000, as amended by the Local Transport Act 2008. In this regard, the West Sussex LTP3 2011-2026 is a strategic policy tool through which the council exercises its responsibilities for planning, management and the development of transport in the county⁹⁰. The four strategies within the LTP3 that guide the Council's approach to maintaining, managing and investing in transport include: promoting economic growth, tackling climate change, providing access to services, employment and housing, and improving safety, security and health.

⁹⁰ West Sussex County Council (2011): 'West Sussex LTP3', [online] available to access via: <https://www.westsussex.gov.uk/about-the-council/policies-and-reports/roads-and-travel-policy-and-reports/west-sussex-transport-plan-2011-26-ltp3/> last accessed [17/09/19]

- 10.4 At the local level, policies within the 'Transport' section of the Adopted Arun Local Plan 2018 directly relate to the Transportation SEA theme.

Baseline Summary

Summary of Current Baseline

Rail network

- 10.5 There are no railway stations within Walberton parish. The nearest mainline railway station connecting residents to the national network is in the settlement of Barnham, approximately 1km to the south west of the Neighbourhood Plan area. This station is a stopping point along the West Coastway line between Brighton and Southampton. Trains operated by 'Southern' also regularly depart for London Victoria (via Gatwick Airport), Portsmouth, Littlehampton and Bognor Regis⁹¹ from this station.

Bus network

- 10.6 Regarding the bus network, local bus services (primarily route number 85) connect the parish to Chichester, Bognor, and Barnham. The 'Transport' evidence base document completed to support the preparation of the Neighbourhood Plan notes that the use of these bus services to connect with rail services is limited due to the low frequency of these services.
- 10.7 No bus services run on Sundays and weekday services do not readily assist commuters travelling to work⁹². There are no buses that serve Binsted itself, but the Fontwell service passes Havenwood Park on the A27, a mile to the north of the village⁹³. Also, there are no Saturday services to Arundel or Chichester and services are being cut locally.

Road network and congestion

- 10.8 The A27 partially crosses the northern boundary of the Neighbourhood Plan area, connecting residents to the settlements of Arundel (to the east) and Chichester (to the west). The road is the principal east to west route along the South Coast in the region. Considerable congestion occurs at Chichester, Arundel and Worthing along the A27.
- 10.9 The A29 passes north to south. At the west of the parish, its junction with the A27 connects Fontwell Village and considerable congestion occurs during peak periods of traffic. The A29 continues to the settlements of Westergate, Woodgate and Shripney, before reaching Bognor Regis at the coastline.
- 10.10 Local concerns surround the volume of traffic on The Street in Walberton during school times. The safety of pedestrians along the parish's narrow, mostly unlit and un-paved lanes is also of concern, particularly due to the increasing volume of visitor and commercial traffic.

Cycle and footpath network

- 10.11 A comprehensive Public Rights of Way network serves the Neighbourhood Plan area, with numerous footpaths and bridleways linking between villages and the wider countryside.
- 10.12 In terms of the cycle network⁹⁴, there are no routes which pass through the Neighbourhood Plan area. The nearest route (number 2) passes south of the Parish through Bognor Regis and Chichester.

⁹¹ Trainline (2019): <<https://www.thetrainline.com/stations/barnham>> last accessed [18/09/19]

⁹² West Sussex Transport Plan 2011-2026: [online] available to access via: <http://www.walberton-pc.gov.uk/Evidence_Base.aspx> [last accessed 29/11/19]

⁹³ Walberton Neighbourhood Development Plan (2016): [online] available to access via <https://www.southdowns.gov.uk/wp-content/uploads/2017/03/Walberton_Made-NDP.pdf> last accessed [27/11/19]

⁹⁴ Sustrans (2019): 'National Cycle Network Map', [online] available to access via: <<https://www.sustrans.org.uk/national-cycle-network/>> last accessed [17/09/19]

Availability of cars and vans

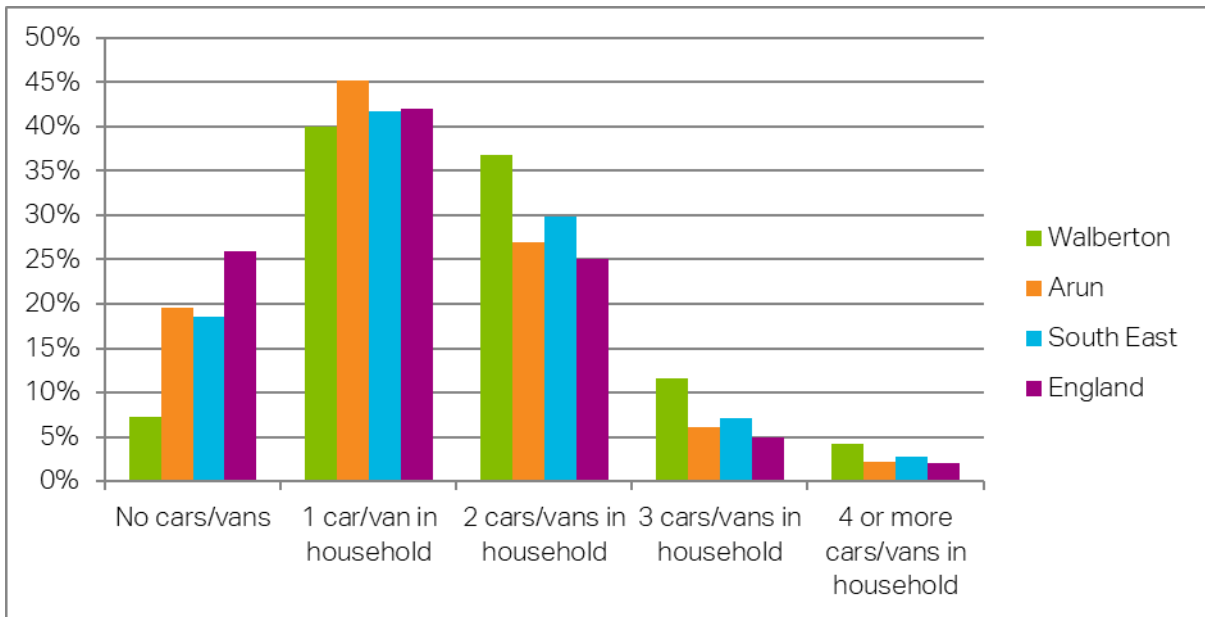


Figure 10.1: 'Car and van ownership' ⁹⁵

10.13 Based on the 2011 census data presented in **Figure 10.1** above, 92.7%% of households in the Neighbourhood Plan area have access to at least one car or van, which is higher than the totals for Arun (80.5%), the South East of England (81.4%) and England (74.2%).

10.14 Likewise, the total number of households in the Neighbourhood Plan area with access to at least two cars or vans (52.7%) is higher than the totals for Arun (35.3%), the South East of England (39.7%) and England (32.0%).

Travel to work

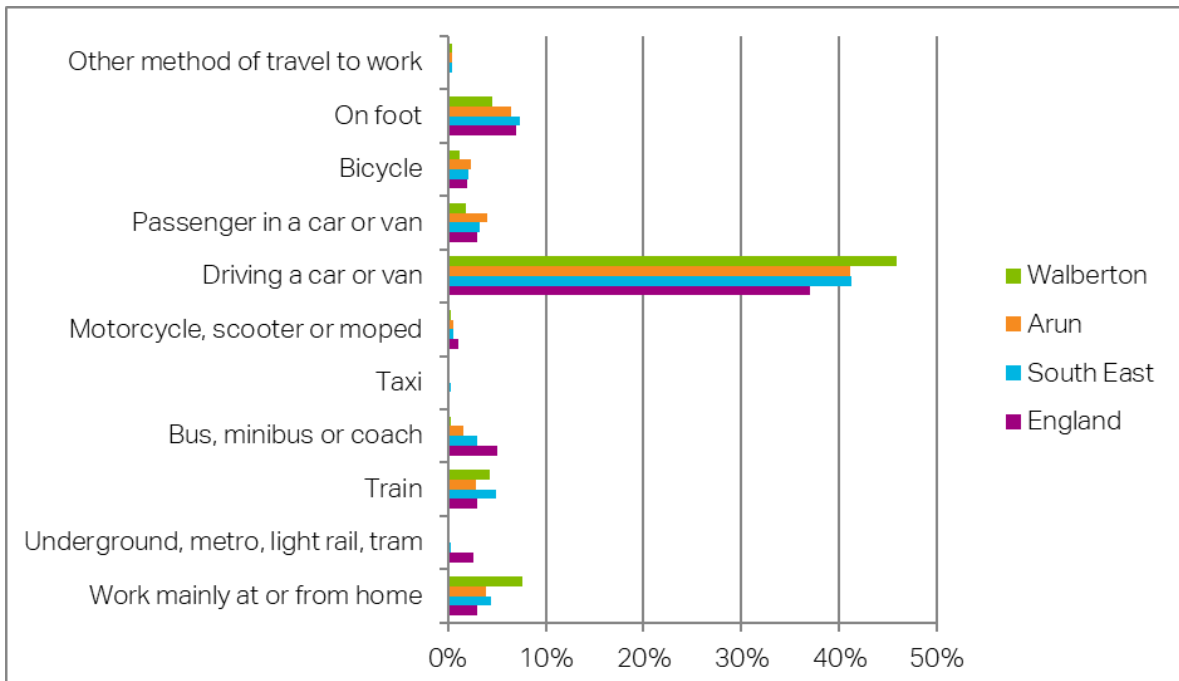


Figure 10.2: 'Method of Travel to Work'⁹⁶

⁹⁵ ONS (no date): 'Car or Van Availability 2011', (Table QS416EW)

⁹⁶ ONS (no date): Census 2011: 'Method of Travel to Work 2011' (Table QS701EW)

10.15 As shown in **Figure 10.2**, the most popular method of travelling to work in the Neighbourhood Plan area is via driving a car or van (45.8%) which is greater than the totals for Arun (41.1%), the South East of England (41.3%) and England (37.0%).

10.16 A lower percentage of residents in the Neighbourhood Plan catch a train, bus, minibus, coach or walk to work (9.1%) in comparison to the totals for Arun (10.9%), the South East of England (15.4%) and England (15.0%).

Summary of Future Baseline

10.17 New development has the potential to increase traffic and cause congestion within the Neighbourhood Plan area, principally at junctions on key routes. This is likely to continue to be more pronounced during peak times (i.e. rush hours). This is particularly significant in the local context, due to the pressures from the local road network (particularly from the A27 and A29).

10.18 Public transport use is likely to remain low compared with private car use. This is due to the relative poor connectivity of the Neighbourhood Plan area via public transport, particularly in the absence of a train station and with the limited frequency of bus service connecting to the neighbouring station at Barnham.

10.19 Whilst negative effects of new development on the transport network are likely to be mitigated in part by the LTP, there will be a continuing need for development to be situated in accessible locations.

Key Sustainability Issues

- There are no railway stations within Walberton parish. The nearest mainline railway station connecting residents to the national network is in the neighbouring settlement of Barnham.
- In terms of congestion, key concerns include the volume of traffic on the A29 and associated queues. The safety of pedestrians along village lanes is also a concern, particularly for children walking or cycling to school.
- A lower percentage of residents in the Neighbourhood Plan catch a train, bus, minibus, coach or walk to work (9.1%) in comparison to the totals for Arun (10.9%), the South East of England (15.4%) and England (15.0%).
- 92.7% of households in the Neighbourhood Plan area have access to at least one car or van, which is higher than the totals for Arun (80.5%), the South East of England (81.4%) and England (74.2%).
- The total number of households in the Neighbourhood Plan area with access to at least two cars or vans (52.7%) is higher than the regional and national trends.

What are the SEA objectives and appraisal questions for the Transportation SEA theme?

SEA objective	Assessment Questions
Promote sustainable transport use and reduce the need to travel.	<p>Will the option/proposal help to:</p> <ul style="list-style-type: none"> • Encourage modal shift to more sustainable forms of travel? • Facilitate working from home and remote working? • Improve road safety? • Reduce the impact on residents from the road network?

11. Next Steps

Subsequent stages for the SEA process

- 11.1 The five stages of the SEA process⁹⁷ are identified below. Scoping (the current stage) is the second stage of the SEA process.
- i. Screening;
 - ii. Scoping;
 - iii. Assess reasonable alternatives, with a view to informing preparation of the draft plan;
 - iv. Assess the draft plan and prepare the Environmental Report with a view to informing consultation and plan finalisation;
 - v. Publish a 'statement' at the time of plan adoption in order to 'tell the story' of plan-making / SEA (and present 'measures concerning monitoring')
- 11.2 The next stage will involve appraising reasonable alternatives for the Walberton Neighbourhood Plan. This will consider alternative policy approaches for the plan, including alternative spatial strategies. The findings of the appraisal of these alternatives will be fed back to Walberton Neighbourhood Plan Steering Group (the Neighbourhood Plan group) so that they might be taken into account when preparing the draft plan.
- 11.3 Once the draft ('submission version') plan has been prepared by the Neighbourhood Plan group, it will be subjected to SEA and the Environmental Report prepared for consultation alongside it.
- 11.4 Following submission to Arun District Council, and consultation, the Neighbourhood Plan will be put forward for Independent Examination.

Consultation on the Scoping Report

- 11.5 Public involvement through consultation is a key element of the SEA process. At this scoping stage, the SEA Regulations require consultation with statutory consultation bodies but not full consultation with the public.
- 11.6 The statutory consultation bodies are the Environment Agency, Historic England and Natural England. The Scoping Report has been released to these three statutory consultees.
- 11.7 Consultees are invited to comment on the content of this Scoping Report, in particular the evidence base for the SEA, the identified key issues and the proposed SEA Framework.
- 11.8 The consultation period runs from Monday 23rd December 2019 to Monday 3rd February 2020. Comments on the Scoping Report should be sent to:
- Ryan Putt, AECOM
 - Email address: ryan.putt@aecom.com
- 11.9 All comments received on the Scoping Report will be reviewed and will influence the development of the SEA where appropriate.

⁹⁷ In accordance with the stages set out in the National Planning Practice Guidance

This page has intentionally been left blank

