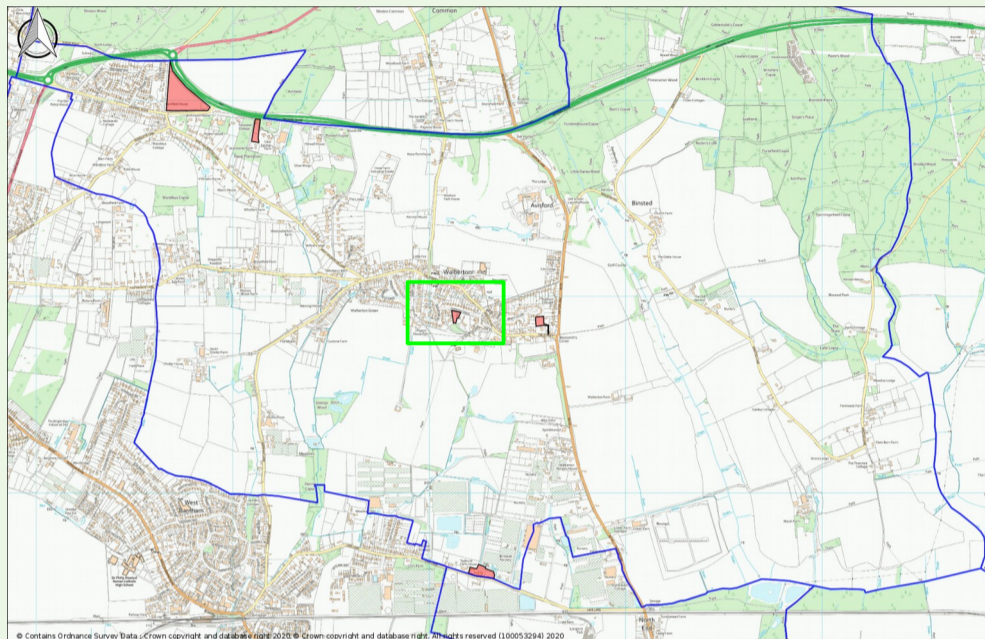




# Site H: Land at Dower House

Site location map



## Site **included** in the Neighbourhood Plan

### Reasons for inclusion

- ✓ AECOM, the Neighbourhood Plan's professional advisors on the site assessments, recommended inclusion:
  - ✓ The site is within the built-up area (dashed line on the location map).
  - ✓ The conclusions from the Housing and Economic Land Availability Assessment (HELAA), that the site is suitable for housing, are reasonable to apply in the Neighbourhood Plan context.
  - ✓ The site meets local policy.
  - ✓ Preferred development is 6 retirement flats or maisonettes within easy walking distance from village facilities.

This site provides a net yield of 6 dwellings.