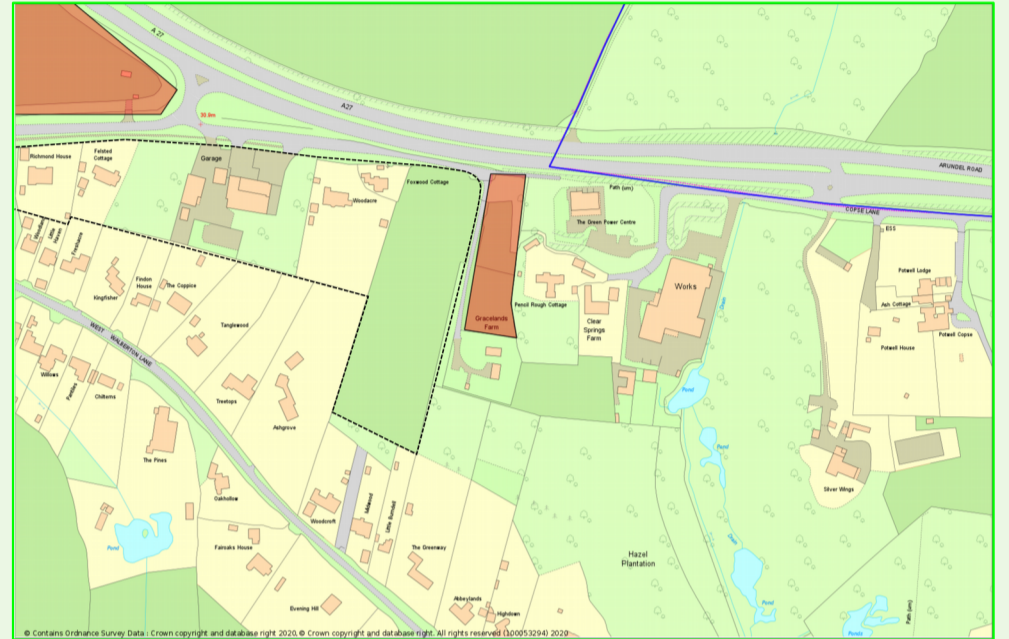
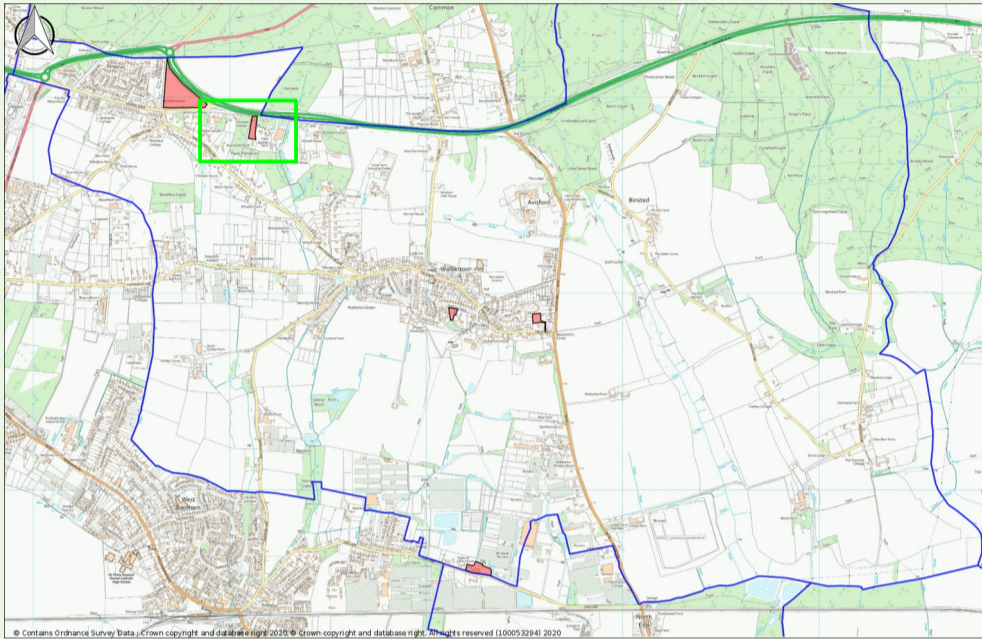




Site 12: Land at Gracelands Farm

Site location map



Site **included** in the Neighbourhood Plan

Reasons for inclusion

- ✓ AECOM, the Neighbourhood Plan's professional advisors on the site assessments, recommended inclusion:
 - ✓ The site meets local policy
 - ✓ It is adjacent to the built-up area boundary (dashed line on the location plan) and adjacent to a site that has recently been granted planning permission.
 - ✓ There are no major physical constraints

This site provides a net yield of 2 dwellings.